



Brightlands Institute for Supply Chain Innovation

Lieven Quintens
Maastricht University

**Brokerage event on calls for collaboration with
African researchers under the Horizon Europe
programme clusters 5 & 6**

23 November 2022



Brightlands Institute for Supply Chain Innovation

Societal impact across the Triple Helix

Research impact

- Supply Chain, digital and sustainability focus
- Fundamental, applied, and action based research
- Commissioned research projects

*Knowledge
development*

Educational impact

- Executive education
- Guest lecturing
- Module development
- Thesis supervision
- Internship opportunities
- PhD opportunities

*Knowledge
transfer*

Market impact

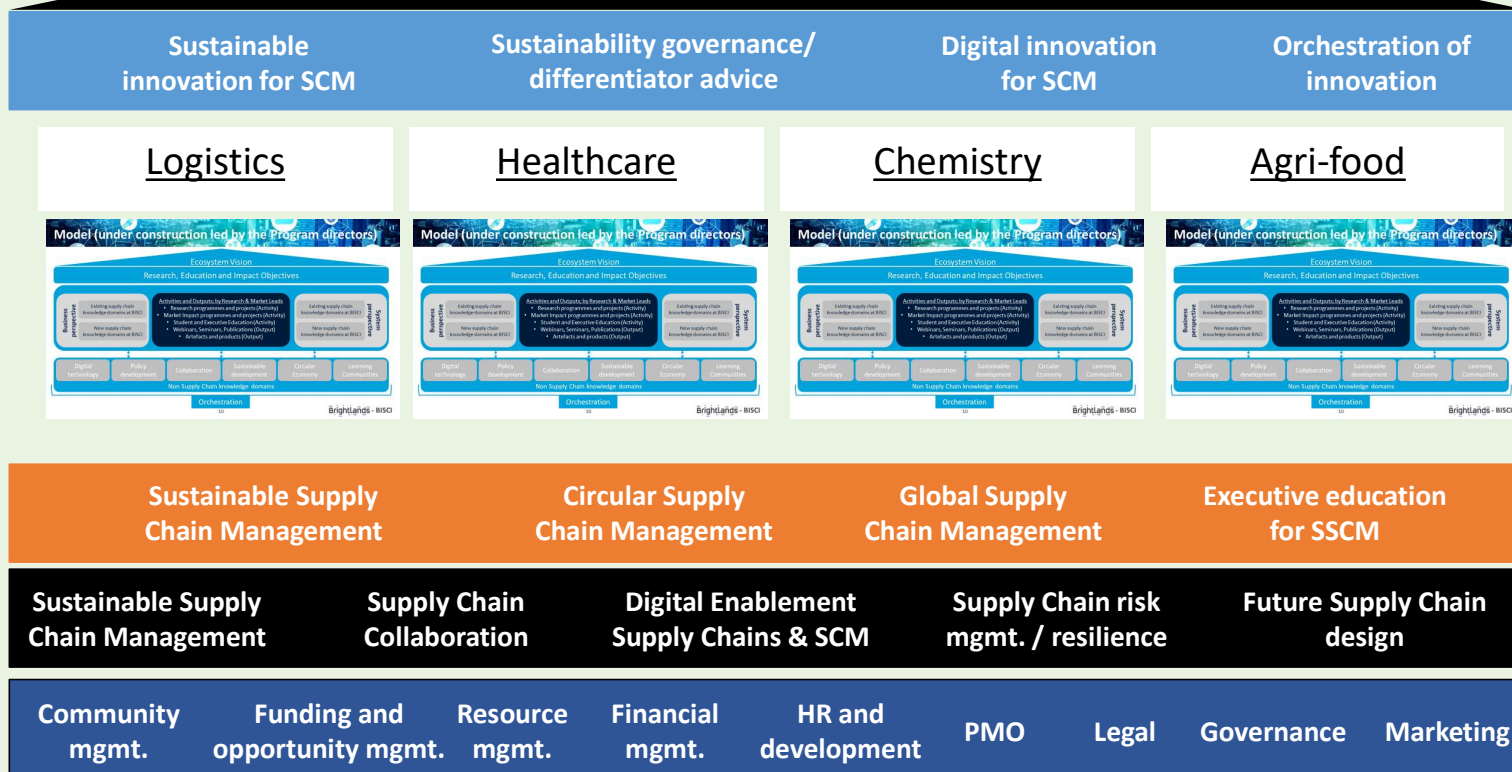
- Independent orchestration of innovation partnerships
- Independent advice
- Internships to transition advice to impact
- Solution co-creation


*Knowledge
implementation*

Expertise



BISCI Vision and Mission





Use digital technology and SC collaboration to enable sustainable, circular and resilient supply chains while using learning communities for change

Energy transition
(sustainability measures and monitoring)

Resilience
(measures and risk management)

Circularity
(supply chain redesign)

enabled by:

Digitalisation
(data driven decision making)

Supply chain cooperation
(alignment of activities)

With the aim to improve the performance in the full supply chain focussing especially on:

Sustainability –
reduction of emissions

Reliability – in situations
with small and large
distortions

Efficiency –
Optimal use of assets and
materials

For a number of relevant application areas in Limburg:

Smart and Sustainable
corridors

Smart and Sustainable
city logistics

Chemelot circularity &
feed stock transition

Healthcare digitization
to reduce stocks

Agrifood

Accomplishing innovation, implementation and valorisation by:

Setting up and organising learning communities with
companies and governments





Contact details

Dr Lieven Quintens

Maastricht University School of Business and Economics

[*l.quintens@maastrichtuniversity.nl*](mailto:l.quintens@maastrichtuniversity.nl)

[*www.maastrichtuniversity.nl/sbe*](http://www.maastrichtuniversity.nl/sbe)

Tongersestraat 53, 6211 LM Maastricht

PO Box 616, 6200 MD Maastricht

T +31 43 388 3778

Among the 1% of the world's business schools to be triple accredited

Times Higher Education (2023): 145th place

Times Higher Education Young Universities (2022): 9th place

QS Top 50 under 50 (2021): 19th place