



The Innovative Health Initiative

Hugh Lavery
16.11.2023 • R&I Transforming European Healthcare, Permanent Representation of Slovenia

Outline

- IHI – an overview
- SRIA and Objectives
- Applying for funding
- Get involved/keep up-to-date

WHAT IS IHI?



IHI IS EUROPE'S NEW PARTNERSHIP FOR HEALTH

IHI is a **collaboration** between the EU and the biopharmaceutical, biotechnology, digital health and medical technology sectors, as well as academics, patients, regulators and other healthcare professionals.

FROM IMI TO IHI



IHI will build on the extensive experience of **IMI's 14 years and almost 200 projects** to build an interdisciplinary, sustainable, patient-centric health research partnership to help transform patients' lives.

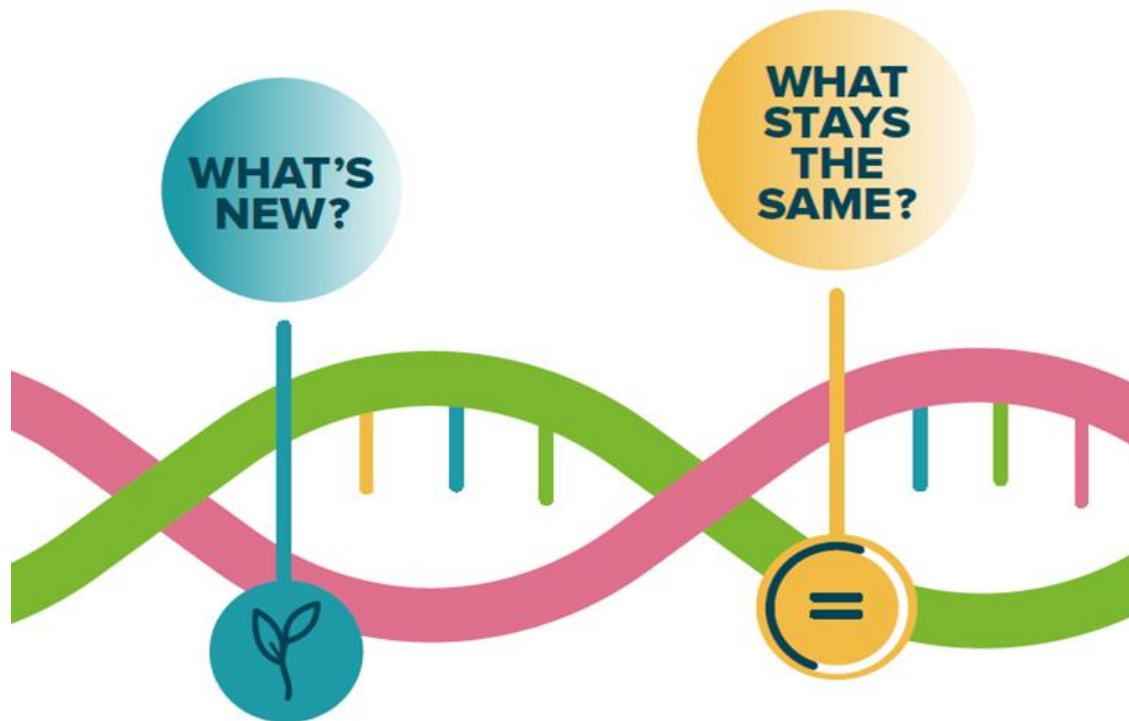
IHI PARTNERS



The industry members that make up the new partnership are:

COCIR
EFPIA
EuropaBio
MedTech Europe
Vaccines Europe

The public member in the partnership is the European Union, represented by the **European Commission**



- The way we're governed will change.
- The scope of the partnership is broader than IMI as it will cover the **entire continuum of care**.
- There will be new, specific objectives that align with the EU's latest health policy strategies.

- **Funding comes equally** from the public and industry partners.
- Calls for proposals will be **open and competitive**.
- Projects started under IMI will be managed by IHI.

- A new Strategic Research and Innovation Agenda
- The Science and Innovation Panel
- One and two stage calls

IHI JU Budget

IHI will work to reach its objectives with the following resources:

- up to EUR **1.2 billion** provided by the European Union (Horizon Europe Health Cluster),
- at least EUR **1.0 billion** provided by the member industry associations,
- up to EUR **200 million** from Contributing Partners.

IHI contributes to EU policies

IHI's projects are expected to contribute to EU policies:

- Horizon Europe (of which IHI is a part)
- Europe's Beating Cancer Plan
- The new Industrial Strategy for Europe
- The Pharmaceutical Strategy for Europe
- The European Health Data Space

IHI contributes to the UN Sustainable Development Goal 3 on ensuring healthy lives and promoting well-being for all at all ages.

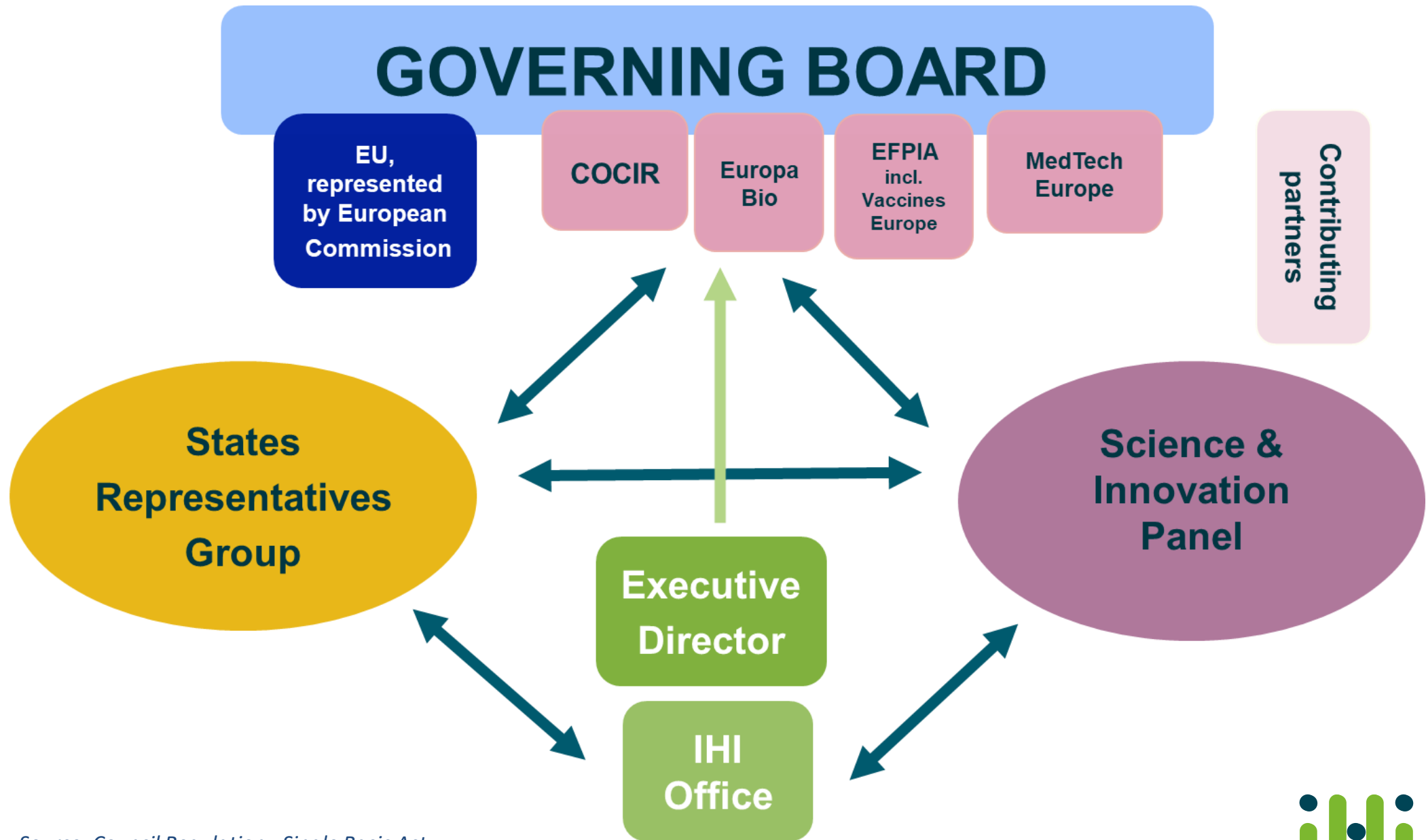


Synergies

- IHI builds on lessons learned from the Innovative Medicines Initiative
- IHI is not meant to be a direct continuation of IMI. Rather, IHI will build on IMI's results and ongoing initiatives within a new platform with a broader scope, more partners and a wider stakeholder base.
- IHI will seek synergies with other Horizon Europe activities, including other European partnerships, as well as other EU and national programmes.



- Governance



Source: Council Regulation - Single Basic Act



- Strategic Research and Innovation Agenda (SRIA)

Strategic Research & Innovation Agenda

Focus

- **Cross-sectoral approaches** to facilitate creation of new products and services to **prevent, intercept, diagnose, treat and manage diseases** and foster recovery more efficiently.

Goal

- Lay foundations for development of **safer and more effective health care products or solutions** that respond to **unmet public health needs** and that can be implemented into healthcare systems.

IHI's general objectives

IHI's objectives are set out in the legislation creating IHI

Our general objectives are to:

- turn health research and innovation into **real benefits for patients and society**;
- deliver safe, effective health innovations that **cover the entire spectrum of care** – from prevention to diagnosis and treatment – particularly in areas where there is an unmet public health need;
- make Europe's health industries globally **competitive**.

Specific objectives

- a. **Improve our understanding of the factors that affect our health** and the development and treatment of certain **diseases**.
- b. **Integrate fragmented health research and innovation efforts** by bringing together health industry sectors and other stakeholders. This will enable the development of tools, data, platforms, technologies and processes to facilitate the prevention, diagnosis, treatment and management of diseases, especially in **areas of unmet public health need**

Specific objectives

- c. **Demonstrate the feasibility of integrated healthcare solutions** that draw on various technologies from different sectors and address the needs of the people who will use them, such as patients and healthcare professionals.
- d. **Make better use of opportunities to gather health data and use it** in research and care, all while respecting relevant privacy legislation.
- e. **Develop ways of assessing the value of innovative, integrated health care solutions** to patients, carers, healthcare professionals and organisations, and other stakeholders.

- 
- Apply for funding

Apply to IHI calls

- Calls 4 and 5 launched **27th July 2023**
- Full topic texts, along with recordings of information webinars and the brokerage event are available on the IHI website

<https://www.ihl.europa.eu/apply-funding>

IHI call 5 (single stage call)

- Accelerating the implementation of new approach methodologies and other innovative non-animal approaches for the development, testing and production of health technologies
- Development and proof of principle of new clinical applications of theranostics solutions
- Improved prediction, detection, and treatment approaches for comprehensive stroke management
- Maximising the potential of synthetic data generation in healthcare applications

Call 5 - single stage – Timelines

| | |
|-------------------------|--|
| Early June 2023 | • Publication of draft topics |
| 27 July 2023 | • Launch of the Call |
| 16 January 2024 | • Call Submission Deadline - Full Proposals (FP) |
| January - February 2023 | • Scientific evaluation – FP |
| End March 2024 | • Evaluation Outcome letters to the applicants |
| End of June 2024 | • Grant Agreement Preparation (GAP) and GA signature |

IHI call 6 (two-stage)

- Support healthcare system resilience through a focus on persistency in the treatment of chronic diseases
- Development of practical guidance and recommendations for using real world data/real world evidence in healthcare decision-making

IHI call 7 (single-stage)

- Improving clinical management of heart disease from early detection to treatment
- User-centric technologies and optimised hospital workflows for a sustainable healthcare workforce
- Clinical validation of biomarkers for diagnosis, monitoring disease progression and treatment response

First IHI projects

Signature of **5 Grant Agreements** from the 1st Call (proposals selected for funding):

- **CLAIMS** - diagnostic platform for MS based on AI models
- **IMAGIO** - using imaging techniques to guide minaturised instruments to cancer sites for more precise treatments
- **PROMINENT** - digital platform to improve diagnosis and treatment of people with AZ disease
- **GUIDE.MRD** - developing better blood tests for the detection of cancer
- **IDERHA** - RWE to improve detection and outcomes in lung cancer

Data, new technologies and digitalisation

- Data, new technologies, digitalisation and cross-sectoral collaboration will be at the core of IHI projects
- Build upon experience of IMI1 and IMI2
- IHI focus will be to go beyond medicines development and supports the translation of scientific progress, technology advances and big data opportunities to improve health care
 - Particular focus on the patient journey - prevention, diagnosis, treatment and management of diseases/conditions
- IHI office is a neutral platform that allows researchers, industries (large and small, different sectors), regulatory bodies, healthcare providers, healthcare professionals, patients, carers to work together

Shape our future research and get involved •

- **Become an evaluator / independent observer**

ec.europa.eu/info/funding-tenders/opportunities/portal/screen/work-as-an-expert

- **Propose new ideas**

ihi.europa.eu/shape-our-future-research/propose-ideas

- **Contribute at programme level:**

- join an industry association
- become a Contributing Partner

ihi.europa.eu/shape-our-future-research/become-contributing-partner

- **Apply to IHI Calls**

Stay in touch

ih innovative health initiative

[Apply for funding](#) [Shape our future research](#) [Projects and results](#) [News & events](#) [About IHI](#)

Innovative Health Initiative

We are an EU public-private partnership funding health research and innovation

Apply for funding [More >](#)

[Find out about our potential future call themes](#) >

[Why apply for IHI funding?](#) >

[How to find partners for your consortium](#) >

Shape our future research [More >](#)

[Apply to be our next Executive Director \(deadline: 14 March\)](#)

[Become a contributing partner](#) >

ihi.europa.eu

Stay in touch

- Sign up for our monthly newsletter: www.ihl.europa.eu/news-events/newsletter
- Follow us on Twitter: [@IHI_Europe](https://twitter.com/IHI_Europe)
- Follow us on LinkedIn: [Innovative Health Initiative \(IHI\)](https://www.linkedin.com/company/innovative-health-initiative)
- Questions? E-mail us: infodesk@ihl.europa.eu



Thank you for your attention

ihi.europa.eu



Co-funded by
the European Union