



Slovenian-Flemish collaboration: What can FWO offer you?

dr.ir. Isabelle Verbaeys – Head International Affairs

28/11/2022

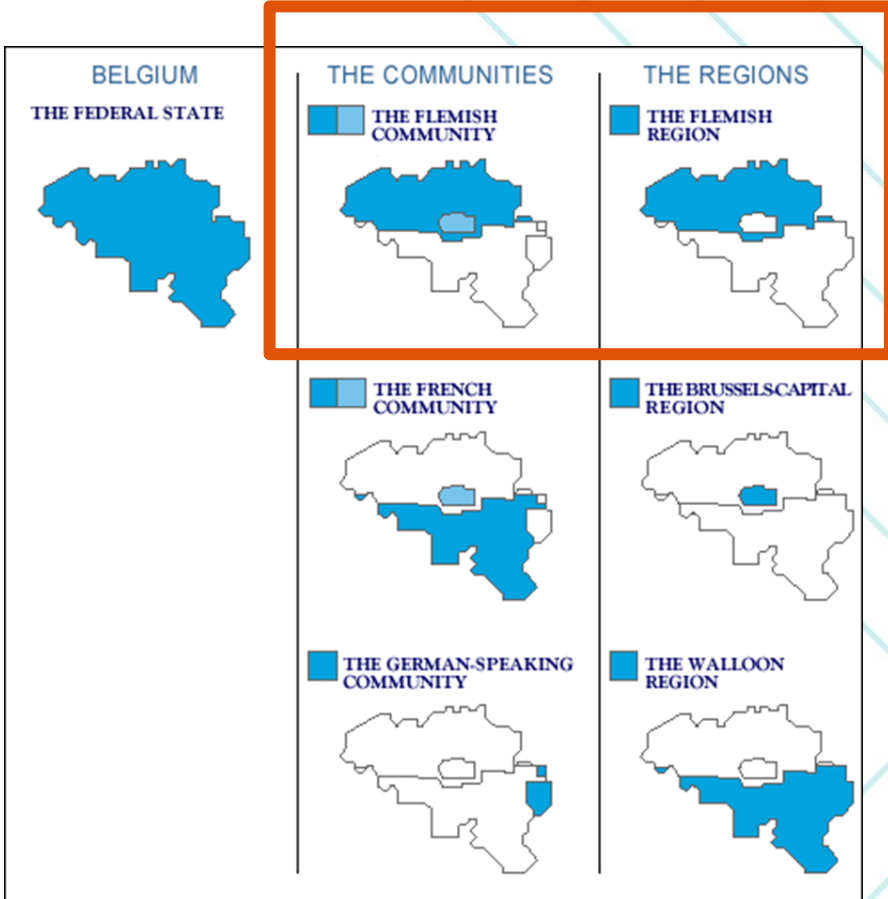
Content

- Scientific Landscape
- Research Foundation – Flanders (FWO)
- FWO's Funding Instruments

Content

- Scientific Landscape
- Research Foundation – Flanders (FWO)
- FWO's Funding Instruments

Belgian Science Landscape



Primary responsibility of Communities/Regions

Communities: Education and basic research

Regions: Economy and applied research

Federal: Thematic programs including marine, space, and polar research (e.g. Station on Antarctica), federal scientific institutions, ...

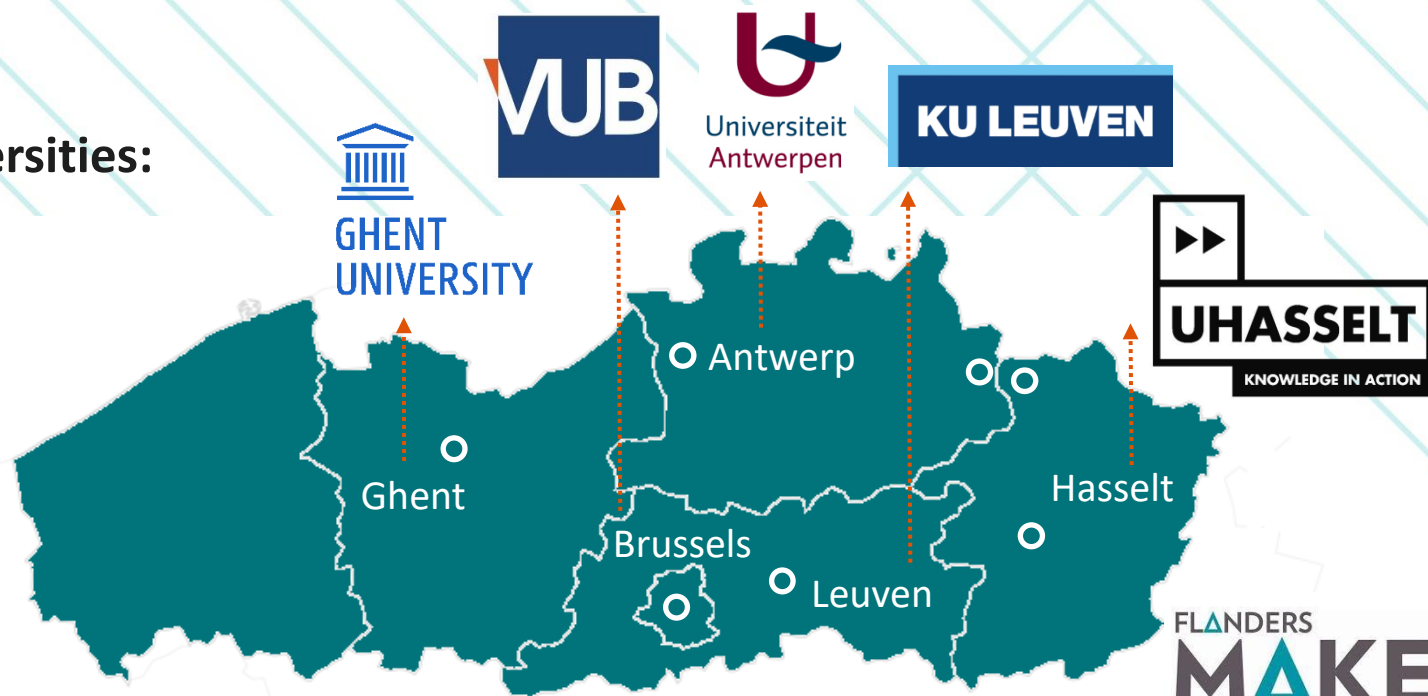
Main funding streams Flanders (since 2016)

- **Research Foundation – Flanders (FWO):**
 - Fundamental research
 - Strategic basic research (former SB/SBO/TBM IWT programmes)
 - Research infrastructure (Before: Hercules)
- **BOF/IOF:** Basic funding for fundamental and industrial research
- **Flanders Innovation and Entrepreneurship (VLAIO):** Applied and Industrial research



Main Research Performing Centers

World-Class Universities:



Leading (Strategic) Research Centers:

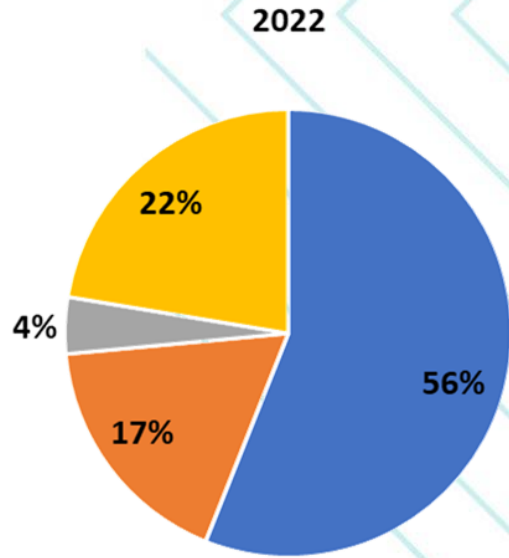


Content

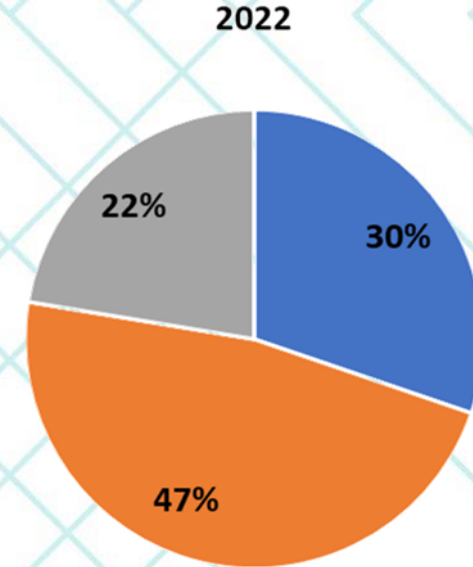
- Scientific Landscape
- Research Foundation – Flanders (FWO)
- FWO's Funding Instruments



Budget 2022: 470 MEUR



■ Fundamental research ■ Strategic Basic Research
■ Clinical Research ■ Infrastructure



■ Fellowships ■ Projects ■ Infrastructure



±1100 Predocs (basic)
 ± 850 Predocs (strategic basic)
 ± 900 Postdocs
 ± 1500 Projects (incl. infra)



50% Predocs 50%
 42% Postdocs 58%



76% Predocs 24%
 58% Postdocs 42%



2022

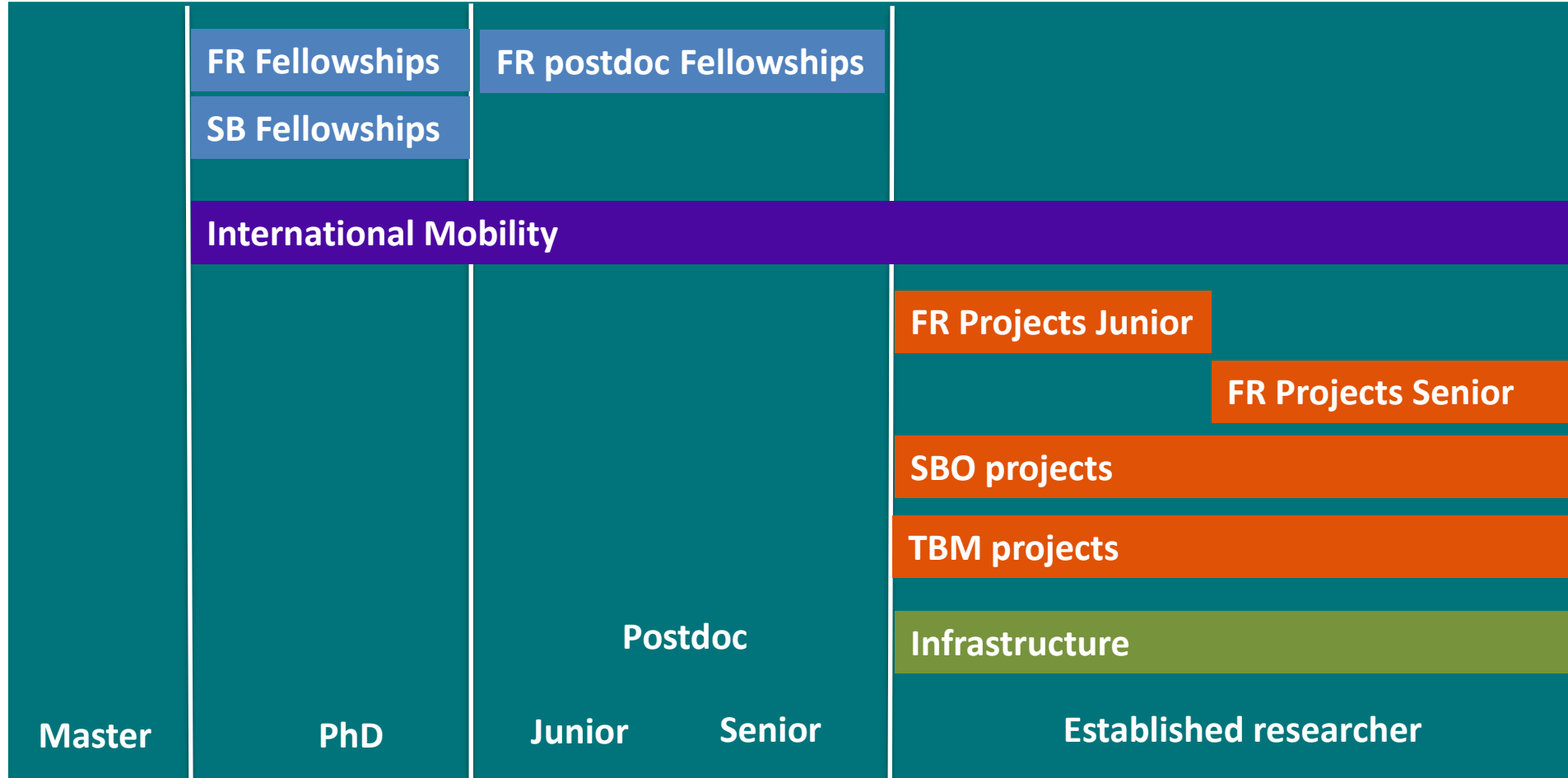
27,4% Predocs (basic)
 30,6% Predocs (strategic basic)
 24,8% Postdocs Junior
 28,3% Postdoc Senior
 21,9% Projects

Content

- Scientific Landscape
- Research Foundation – Flanders (FWO)
- FWO's Funding Instruments



Main FWO Funding Schemes



FR: Fundamental research

SB: Strategic basic research

TBM: Applied biomedical research

Content

- Scientific Landscape
- Research Foundation – Flanders (FWO)
- FWO's Funding Instruments
 1. Fellowships
 2. Projects incl. Weave
 3. Travel Grants
 4. Networking

FWO funding opportunities to stimulate Flemish-Slovenian collaboration

(1) FWO FELLOWSHIPS

- [PhD fellowship fundamental research/strategic basic research](#)
 - Open to all nationalities (eg. Slovenian), requirement: European Master degree (or recognition procedure possible through NARIC)
- [Junior/senior postdoctoral fellowship](#)
 - Open to all nationalities (eg. Slovenian)
 - Junior: PhD obtained not longer than 3 years before start of fellowship
 - Senior: PhD obtained min. 3 years and max. 6 years before start of fellowship
- [Odysseus](#) for (established) researchers

- Attracting Top Scientists to Flanders - Universities in Flanders nominate candidates
- No nationality restrictions but candidate main appointment of min. 80% at foreign institution (eg. Slovenian) on FWO-deadline + other eligibility criteria (see Regulations)
- Start-up funding to develop a research group or to set up a research line at a Flemish university
- Two-yearly call with deadline on 30th of September (2024)

ODYSSEUS



Top science in Flanders

TYPE I

- Internationally recognized leading researchers
- Budget: between € 400.000 and € 1.000.000 per year (max. 5 years)
- Permanent position at a university in the Flemish Community

TYPE II

- Researchers with the potential to grow to a leading position
- Budget: between € 100.000 and € 200.000 per year (max. 5 years)
- Tenure track position at a university in the Flemish Community

www.fwo.be/en/fellowships-funding/research-projects/odysseusprogramme

Content

- Scientific Landscape
- Research Foundation – Flanders (FWO)
- FWO's Funding Instruments
 1. Fellowships
 2. Projects incl. Weave
 3. Travel Grants
 4. Networking

FWO funding opportunities to stimulate Flemish-Slovenian collaboration

(2) FWO RESEARCH PROJECTS

- Junior/Senior FWO research projects fundamental research
 - Junior: supervisor-spokesperson + (co-)supervisor(s) must have obtained first PhD degree max. 12 years before FWO-deadline
 - Senior: supervisor-spokesperson + (co-)supervisor(s) must have obtained first PhD degree more than 12 years before FWO-deadline
- Funding: recently decided new budget conditions
 - Staff + consumables (on project level): min. € 50,000/year
 - Each Flemish or federal partner: max. € 145,000/year
 - Equipment: max. € 150,000/project
- Since 2019 MfC: up to 10% of total FWO-budget possible for non-Flemish research institutions (eg. Slovenian)
- Yearly call: deadline 1st of April



weave
Research funding without borders

FWO funding opportunities to stimulate Flemish-Slovenian collaboration

(2) FWO RESEARCH PROJECTS – WEAVE



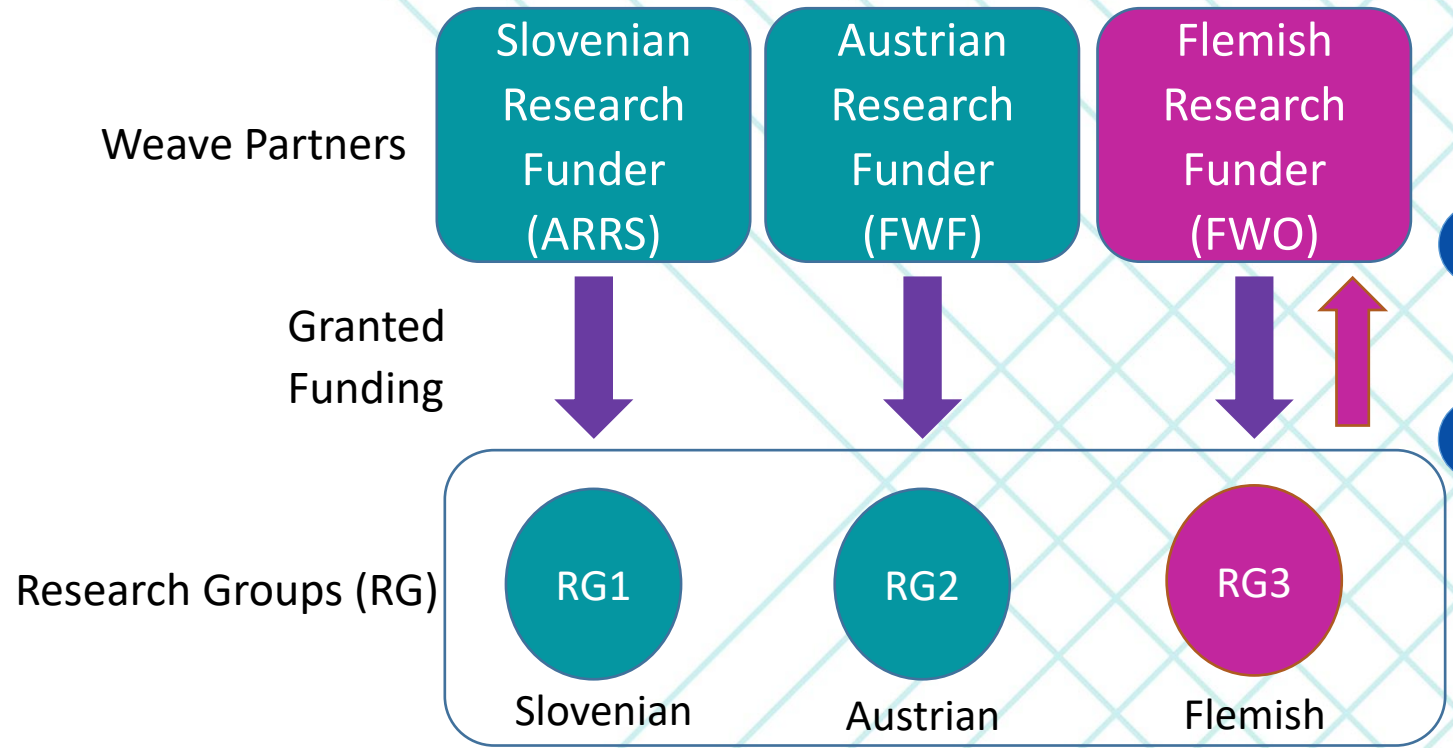
- **Bottom-up cross-European initiative** developed by European research funders
- To support excellent **collaborative bilateral/trilateral research projects** across borders;
- Through a **single evaluation** of the proposals;
- Based on the **Lead Agency Procedure principle**: The funder that receives the proposal (the so-called Lead Agency) evaluates the proposal according to its internal rules set out for its respective national or regional programme open for collaborative Weave projects. The funding recommendation is then communicated to the other funders involved (so-called Partner Agencies), for approval and budgetary purposes

Weave Lead Agency Procedure



Fictional example:

- 4 Partner Agencies ratify the funding decision of the Lead Agency.
- 5 Each research funder finances its own researchers.



- 2 Submission to the Lead Agency (free choice). **Identical Weave project cannot be submitted to more than one agency in the same year.**
- 3 Lead Agency is solely responsible for the evaluation. **Success rate of Lead Agency applies, capped at 20%.**

- 1 Collaborative research project in which each research group adds value. **Equal project duration for all partners!**



Weave Signatories



Currently there are 12 participating funders in Weave:



Der Wissenschaftsfonds.

Austrian Science Fund/*FWF*
AUSTRIA



Fund for scientific research/*FNRS*
BELGIUM



Research Foundation Flanders/*FWO*
BELGIUM



Croatian Science Foundation/*HRZZ*
CROATIA



Czech Science Foundation/*GAČR*
CZECH REPUBLIC



German Research Foundation/*DFG*
GERMANY



Luxembourg National Research Fund/*FNR*
LUXEMBOURG



Research Council of Norway/*RCN*
NORWAY



National Science Centre/*NCN*
POLAND



Slovenian Research Agency/*ARRS*
SLOVENIA



Swedish Research Council for Sustainable Development/*FORMAS*
SWEDEN



Swiss National Science Foundation/*SNSF*
SWITZERLAND

Weave Lead Agency Procedure



Free choice where to submit:

- Success rate of the Lead Agency applies, capped at 20%. More info, see [here](#).
- Equal project duration for all partners, however, maximum project duration might be different depending on Lead Agency. More info, see [here](#).
 - Eg. when ARRS is Lead, project duration is max. 3 years at Slovenian AND at Flemish side.
- Differentiation in Junior/Senior project applications only when you submit at FWO (Lead Agency).
- An identical Weave project cannot be submitted to more than one agency in the same year.

fwo



weave

Research funding without borders

Submit to FWO (FWO Lead Agency)

FWO as LEAD Agency:

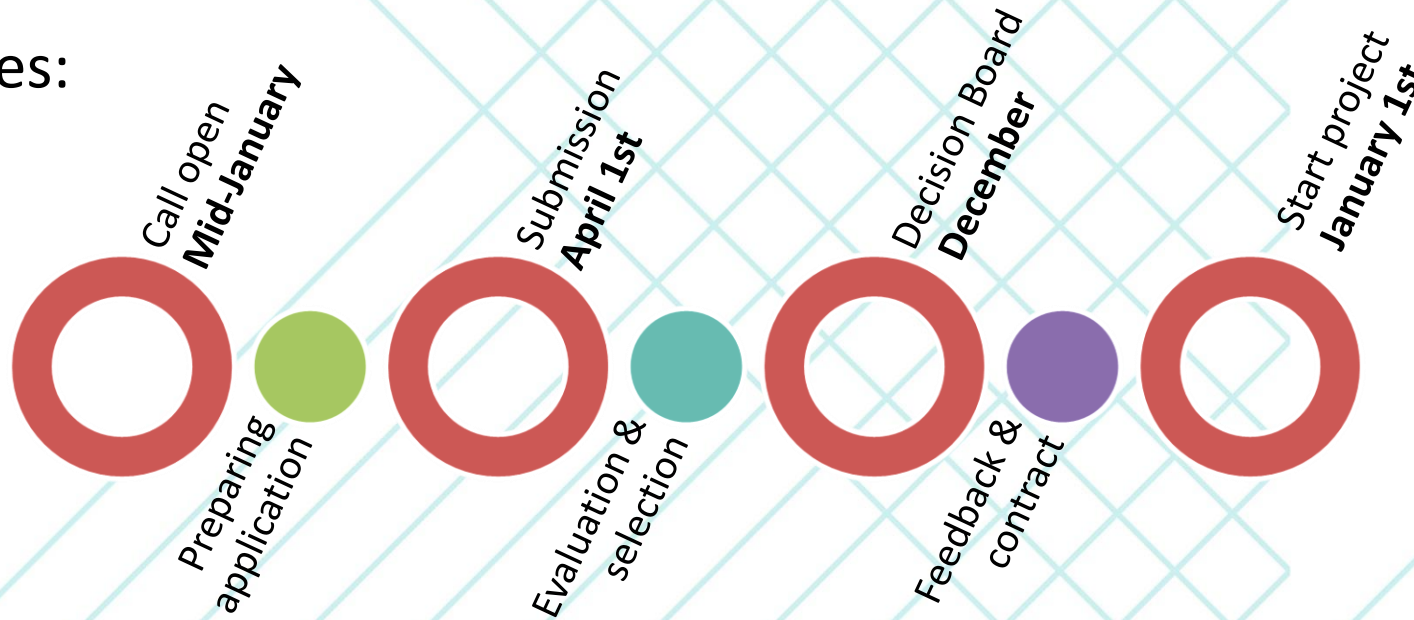
Progressive FWO roll-out of Weave over the coming years:

For the upcoming 2023 call FWO only accepts bilateral or trilateral projects with researchers from the following countries:

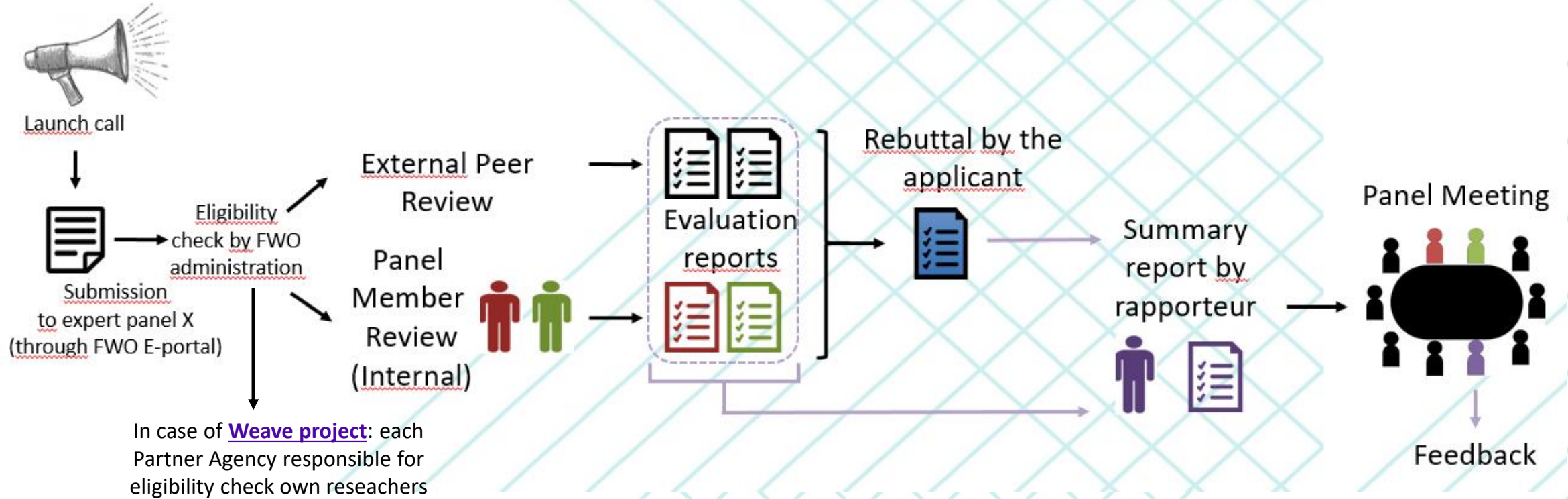
- Germany via DFG (German Research Foundation)
- French-speaking community of Belgium via F.R.S.-FNRS (Fonds de la Recherche Scientifique)
- Luxembourg via FNR (National Research Fund)
- Austria via FWF (Austrian Science Fund)
- Poland via NCN (National Science Center)
- **Slovenia via ARRS (Slovenian Research Agency)**
- Sweden via Formas (Research Council for Sustainable Development) – NEW!
- Switzerland via SNSF (Swiss National Science Foundation)

FWO as Lead: Evaluation procedure FWO Projects Fundamental Research

- Target group
 - Professors ((co-)supervisor) and postdocs (co-supervisor) at eligible universities/research institutes in Flanders
- Junior/senior: parallel calls (Weave projects: only in case FWO is Lead!)
- 4-year projects (min. 2 y.) – start January 1st
 - Fundamental research
- Key dates:



FWO as Lead: Evaluation procedure FWO Projects Fundamental Research



- Project applications **deadline: 1st of April**
- **Start of projects at FWO side: 1st of January**

FWO as Lead:

Evaluation procedure FWO Projects Fundamental Research



- **Research team** **25% weight**
 - Scientific capacity, track record and collaboration

- **Project** **75% weight**
 - Scientific quality, relevance & originality
 - Quality of the research approach & feasibility



- **Budget:** no criterium, but open for dicussion, panel can formulate advice to FWO board of trustees

fwo



weave

Research funding without borders

Submit elsewhere (FWO Partner Agency)

FWO as PARTNER Agency:

- Collaborative proposal:

- Submitted by the responsible foreign research group at the Weave research funder (Lead Agency) for which he/she is eligible.

!!Flemish participants still need to make an administrative submission at FWO!!
Use specific form: RESEARCH PROJECT WEAVE (FWO ACTS AS PARTNER AGENT)

- Evaluated according to the project funding scheme the Lead Agency made available for collaborative Weave projects.

- Flemish partner:

- **Regulations (eligibility, budget, ...) research projects fundamental research apply.**

- Included in max. of 2 projects per application round and max. of 2 requested + running projects as from January 1st 2019!

- Foreign partner(s):

- Regulations (eligibility, budget, ...) foreign research funder for which foreign participating researchers are eligible.

FWO as PARTNER Agency:

Progressive FWO roll-out of Weave over the coming years:

In 2023 Flemish researchers can submit together with their foreign partner a bilateral research project at the following Weave research funders (Lead Agency) for which their foreign partner is eligible:

- Germany via DFG (German Research Foundation)
- French-speaking Community of Belgium via F.R.S.-FNRS (Fonds de la Recherche Scientifique)
- Luxembourg via FNR (National Research Fund)
- Austria via FWF (Austrian Science Fund)
- Poland via NCN (National Science Center)
- **Slovenia via ARRS (Slovenian Research Agency)**
- Sweden via Formas (Research Council for Sustainable Development) – NEW!
- Switzerland via SNSF (Swiss National Science Foundation)

More information:

- [European Weave webpage](#) including simulation tool: With whom can I submit what where?
- Weave-specific [FWO webpage](#) including more background info as well as what to do in case FWO acts as Lead Agency or Partner Agency
- FWO contacts:
 - weave@fwo.be
 - Isabelle Verbaeys – Head of International Affairs – T +32 2 550 15 31
Isabelle.Verbaeys@fwo.be
 - Tinne Jacobs – Advisor International Affairs – T + 32 2 550 15 44
Tinne.Jacobs@fwo.be
 - Gregory Absillis – Science Policy Advisor International Affairs – T +32 2 550 15 29
Gregory.Absillis@fwo.be

FWO funding opportunities to stimulate Flemish-Slovenian collaboration

(2) FWO RESEARCH PROJECTS

- [Excellence of Science \(EOS\) projects](#)
 - Promote joint fundamental research between researchers in Flemish and French-speaking community
 - Funding: up to € 1,000,000/year/project
 - MfC: up to 10% of total budget possible for foreign institutions (“Type IV research group”) (eg. Slovenian)
 - 4-yearly call (next call deadline: 2025 at earliest)
- [Applied Biomedical Research \(TBM\)/Strategic Basic Research \(SBO\) projects:](#)
 - Funding: max. € 500,000/year (SBO) / max. € 850,000 (TBM)
 - MfC: up to 20% of total budget possible for non-Flemish research centers (“co-applicant”) (eg. Slovenian)
 - Yearly calls, see specific websites for details

Content

- Scientific Landscape
- Research Foundation – Flanders (FWO)
- FWO's Funding Instruments
 1. Fellowships
 2. Projects incl. Weave
 3. Travel Grants
 4. Networking

FWO funding opportunities to stimulate Flemish-Slovenian collaboration

(3) FWO TRAVEL GRANTS - INCOMING

- [Grant for a scientific stay in Flanders](#)
 - NEW since June 2022!
 - Who? Researchers from postdoctoral level onwards, appointed min. 50% outside Belgium – open to all nationalities (eg. Slovenian)
 - What? Scientific stay in Flanders of min. 1 – max. 3 months
 - Added value for (research group in) Flanders is crucial: has to be scientifically motivated in depth in invitation (recommendation) letter of Flemish host researcher (obligatory upload in application)
 - FWO funding for travel + daily allowance
 - No call, continuous submission system (submission no later than 3 months prior to departure)

FWO funding opportunities to stimulate Flemish-Slovenian collaboration

(3) TRAVEL GRANTS - OUTGOING

- [Grants for outgoing mobility](#) (eg. towards Slovenia) for researchers affiliated to research institution in Flanders:
 - Grant for participation in conference abroad
 - Grant for short study visit abroad
 - Grant for participation in conference/workshop abroad
 - Grant for long stay abroad (incl. long stay at ERC Grantee abroad)
- FWO funding for travel + daily allowance
- No calls, continuous submission system (submission no later than 3 months prior to departure)



FWO funding opportunities to stimulate Flemish-Slovenian collaboration

(4) FWO FUNDING FOR INTERNATIONAL CONTACTS/NETWORKS

Stimulate international networking for researchers in Flanders:

- [Scientific Research Network \(SRN\)](#)
- [International Coordination Action \(ICA\)](#)
- [Organisation of scientific conference in Belgium](#)

FWO Community building



- Stay tuned: (digital) **FWO Newsletter**, [subscribe here](#)



- Follow us on **Social media**: @FWOVlaanderen
 - #FWOVlaanderen 
 - [Website](#), Facebook, Twitter, LinkedIn, Instagram

- Possibilities for FWO-beneficiaries to **share experiences, gain visibility**:



- write a blogpost, Instagram-takeover, ... (!) (contact: communicatie@fwo.be)

- Be included in our **mailing list** of individual researchers who we inform every time we launch a new international call (contact: Tinne.Jacobs@fwo.be)

Questions? Vprašaj?



Honore de Balzac

The key to all sciences is unquestionably the question mark. To the word How? we owe most of our greatest discoveries. Wisdom in life may perhaps consist in asking ourselves on all occasions: Why?

AZ QUOTES



Opening new horizons

More info on www.fwo.be

Thanks for your attention

Join us

