



**S5 & SBE –
Future belongs to Green & Blue**

**EVENT: Fostering transregional S3-based cooperation:
Advancing the sustainable blue economy through
macroregional innovation collaboration
SI PermRep, Brussels, April 20th 2023
Gorazd Jenko, MCRD**

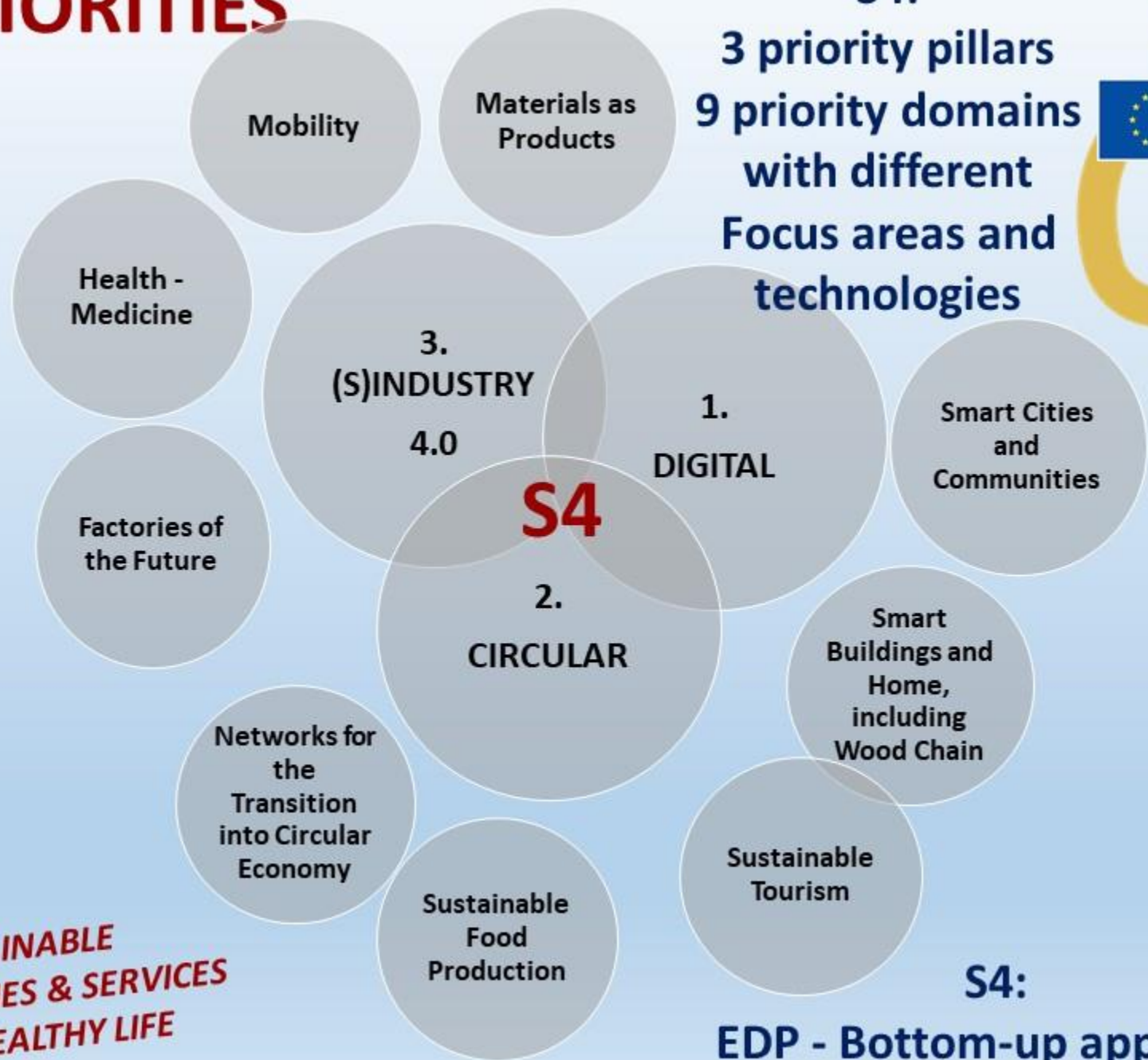


Embedding Macroregional cooperation in territorial Smart Specialisation strategies



- Potential and importance of MacroRegional cooperation / projects like BlueAir for national/regional development policies
- Case of BlueAir project & S5 – Experience & Added value
- Lessons learnt and different possibilities for capitalisation

S4 PRIORITIES



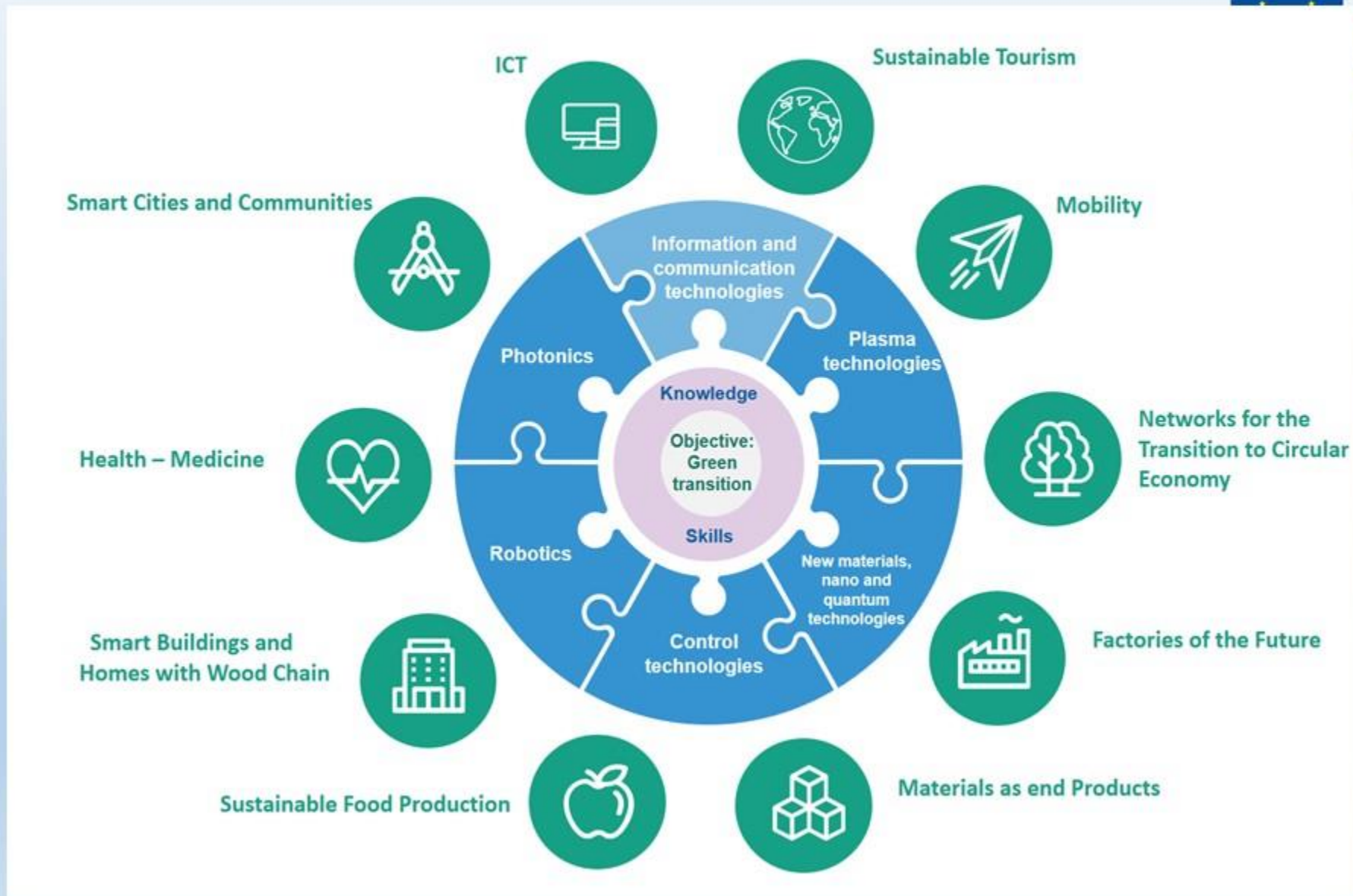
S4:
3 priority pillars
9 priority domains
with different
Focus areas and
technologies



**SUSTAINABLE
TECHNOLOGIES & SERVICES
FOR A HEALTHY LIFE**

S4:
EDP - Bottom-up approach

WHY S5? → S5 Logic:



S4 → S5: Main Characteristics



- More coherent and overarching Logic of S5
- Stability of the main structure – Priority areas remain the same with more attention/visibility to Digital becoming now a separate priority (analysis & EDP)
- Stability in terms of Governance structure – MLG – **SRIPs**
- Stability and expansion in terms of Policy mix measures and sources of financing
- Clear and understandable Main Goal – Green transition
- Clear „Enabling conditions“ for the goal: (i) **with** adequate Knowledge and skills, (ii) **through** empowered/more visible KETs (iii) **on** selected Priority domains (Focus areas / Product Groups)
- More visible „horizontal“ topics of S5: (Green & Sustainable S5, **SBE**, SI & S-Econ)

S5: S-Blue Economy development? – where is BlueAir/MRApproach?



- S4 → S5: S-Blue economy has now its place and potential in S5
- However, No dedicated priority nor focus area → embedded in some of the identified Product lines/FAT
- Mapping of SBE potential → more precise identification of dedicated Product line(s) in future; Champions but lower/no critical mass → why not upgrading national with more detailed MR approach? →
- BlueAir project! – use of MRA for EDP, International dimension & potential for TA – 2way street of SBE: from Nat/Reg S3s' to design a MR S3 & from MR potential & identification to embed TA in Nat/Reg S3s' – **AV**
- Not to forget!: EDP is a continuous phenomenon 😊 and open all the time → adaptation of S3s

Future belongs to Green & Blue

Lessons learnt / Capitalisation



Lessons learnt - possible areas of capitalisation:

- Importance of MRC in areas of lower critical mass on regional/national level & high potential with joint interest on MR level
- Use of this/similar approach in other MR Programmes
- Use of experience also for other topics/areas of MR Cooperation
- Further development of (this and similar) strategic projects on policy level in a way to „marry“ them with some possibly already existing concrete successful cases (or develop a new pilot case in one of identified priority potential) and/or expand geographically
- Importance of BIC/AIC (CoP), Skills & Competences

Future belongs to Green & Blue

