



# RUFORUM @ a GLANCE

Regional Universities Forum for Capacity Building in Agriculture

Dr. Florence Nakayiwa  
Deputy Executive Secretary – RUFORUM  
[f.nakayiwa@ruforum.org](mailto:f.nakayiwa@ruforum.org)



# RUFORUM Founded in 2004 by 10 African



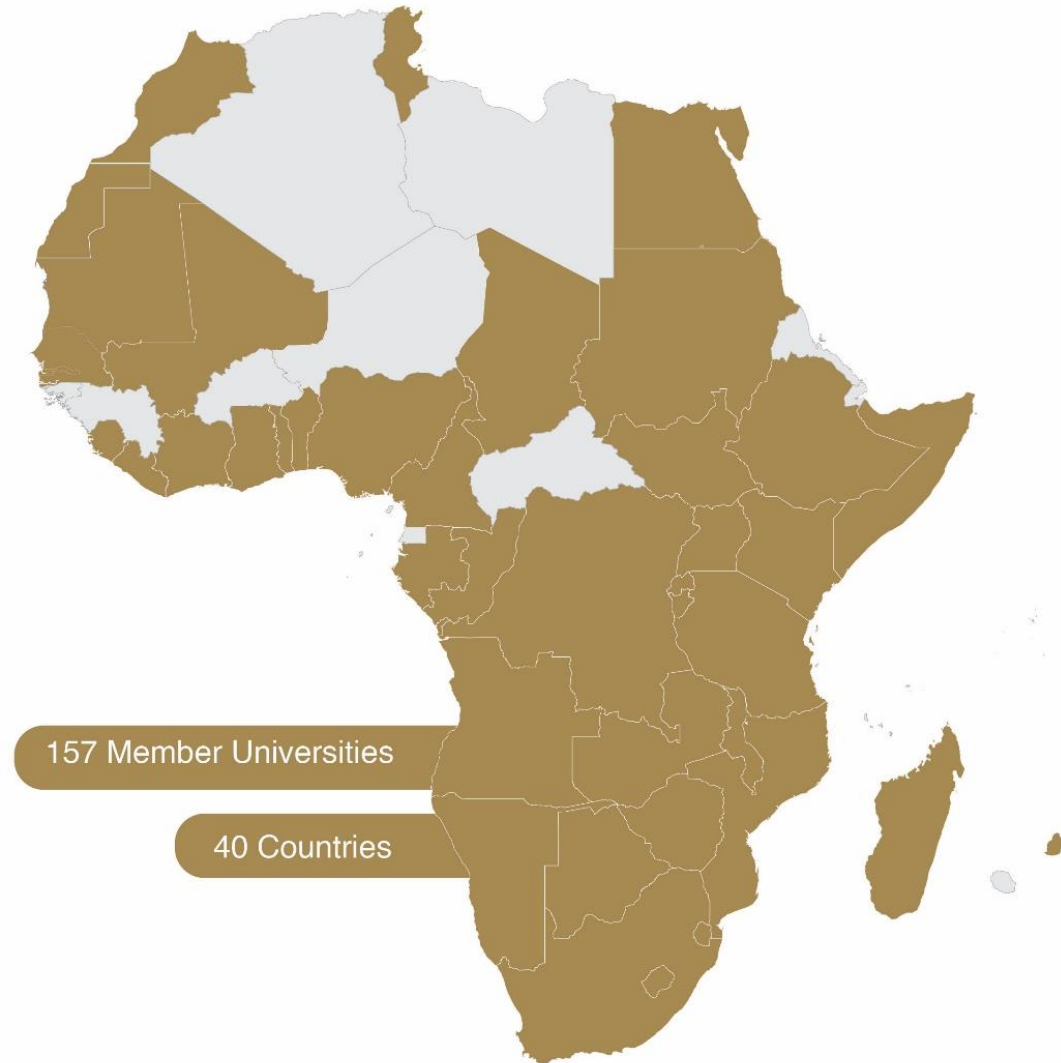
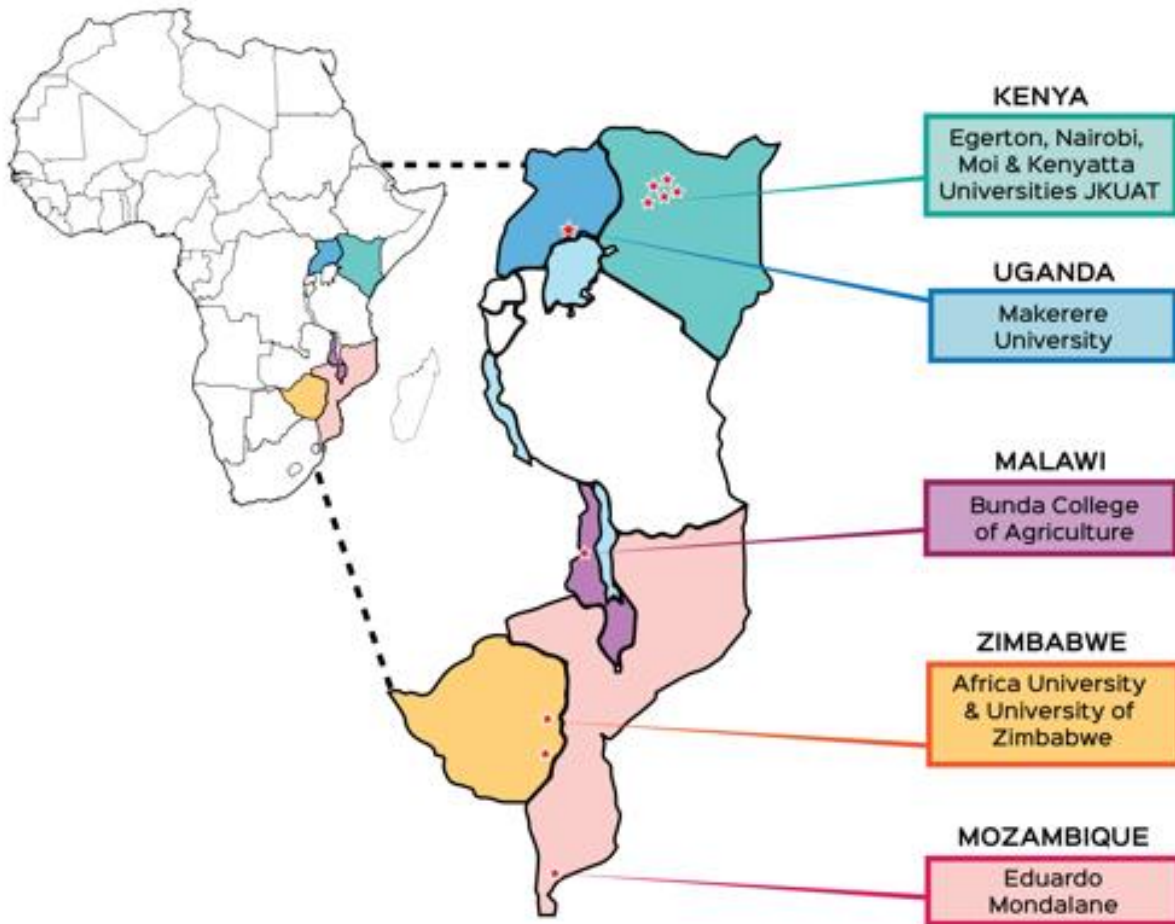
## Vice Chancellors to:


1. Provide a platform for **networking, resource mobilization and advocacy** to transform universities for relevance towards inclusive sustainable development
2. **Rationalize resource** use and enhance economies of scale and scope
3. Provide **a platform for training quality graduates** to support development processes in Africa

# RUFORUM Membership

**2004**

**2022**



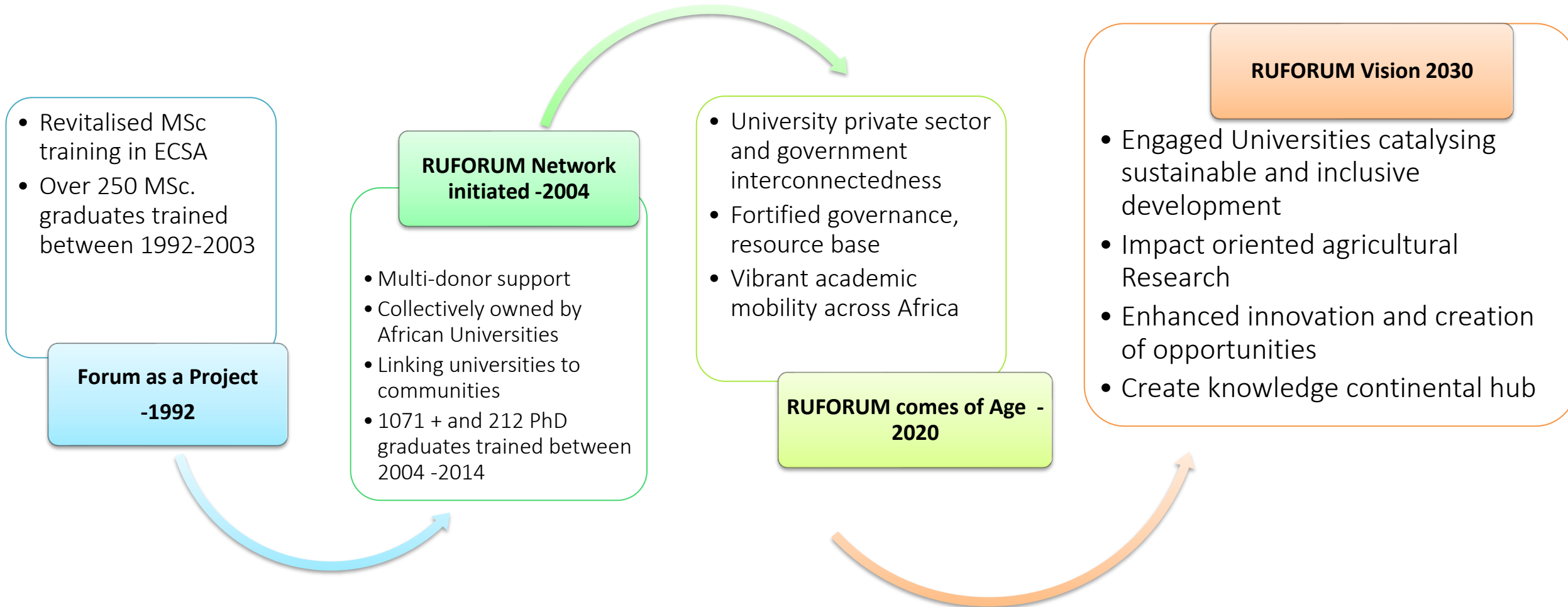


*“Transforming agriculture in Africa requires innovative scientific research, educational and training approaches. The education sector needs to be more connected to the new challenges facing rural communities and needs to build capacity of young people to be part of the transformation of the agricultural sector”*

**RUFORUM PHILOSOPHY:  
OUR MOTIVATION**

# RUFORUM Evolution

## Universities responding to development challenges





Regional Universities Forum for Capacity  
Building in Agriculture (RUFORUM)

# Vision 2030



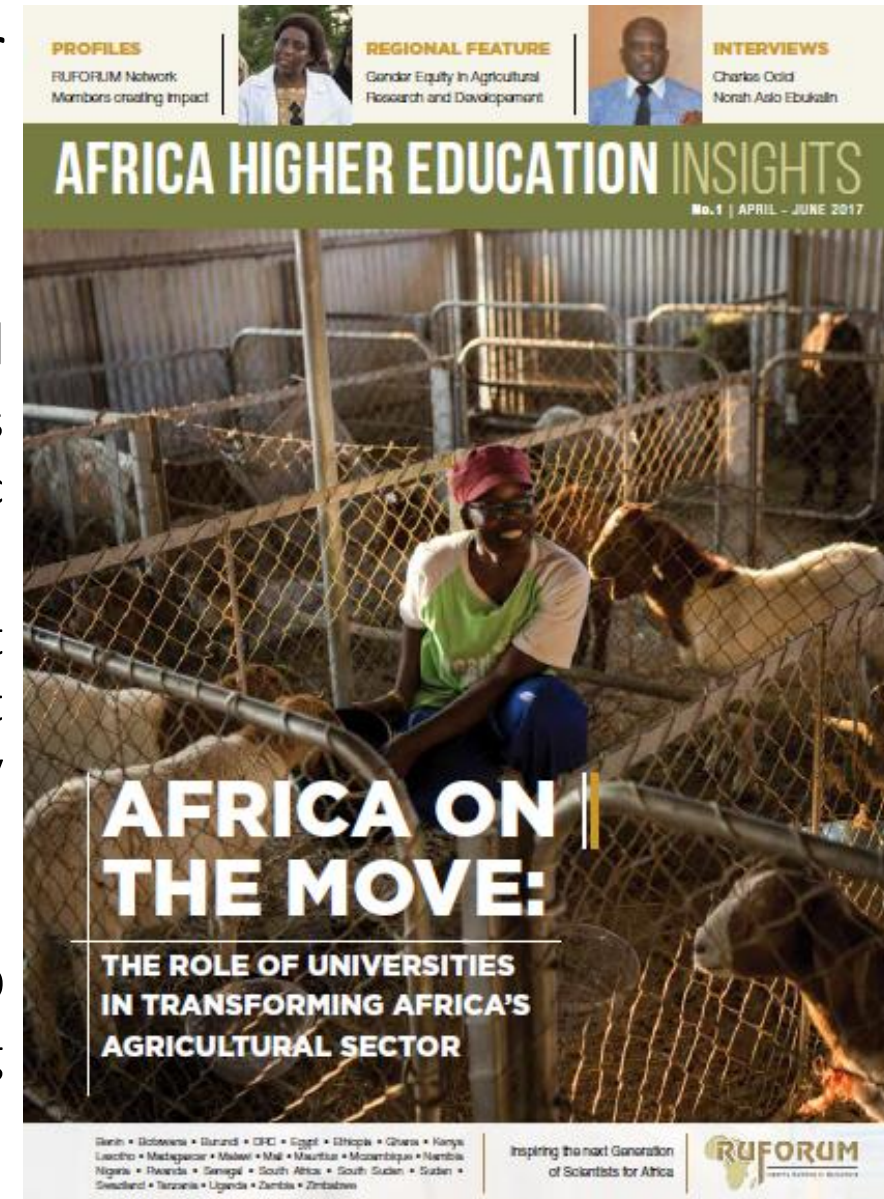
The African Universities' Agenda for  
Agricultural Higher Education, Science,  
Technology and Innovation (AHESTI)

Abridged

# Strengthening Agricultural Higher Education, Science, Technology and Innovation (AHESTI) in Africa

# Four Flagship Programmes

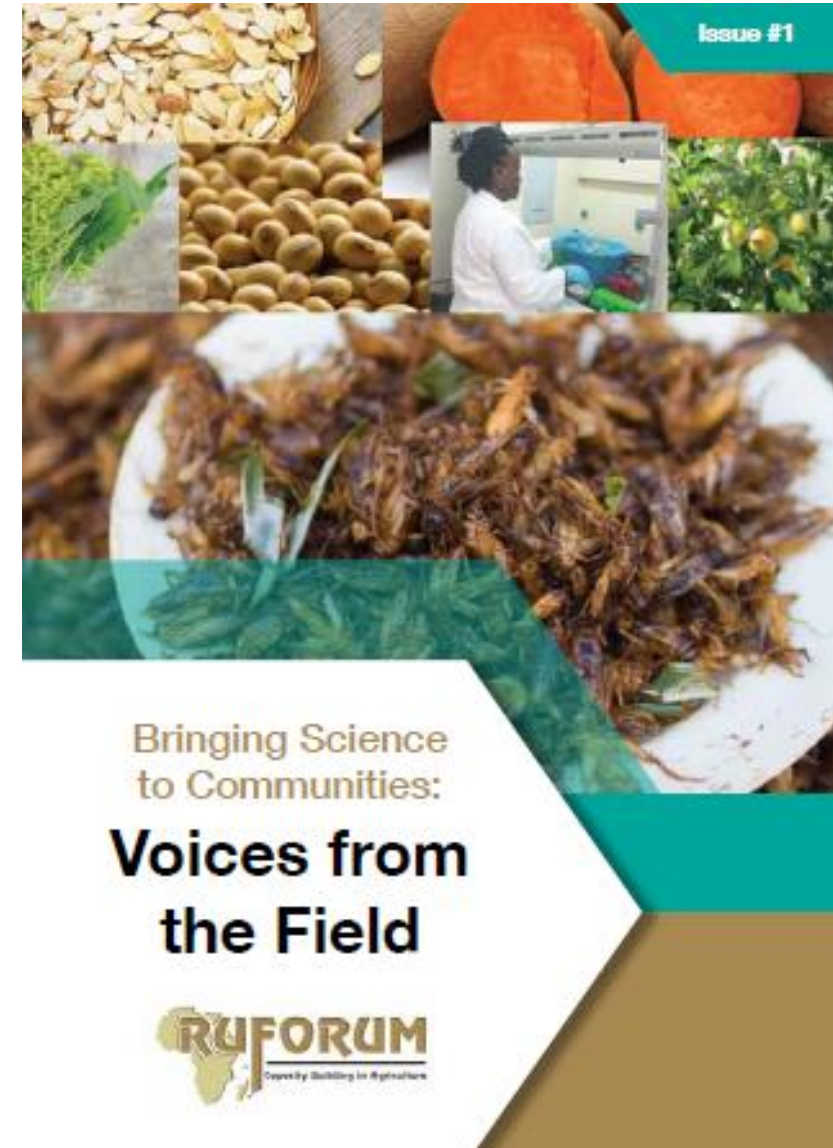
1. **TAGDEV - Transforming African Agricultural Universities for Africa's Growth and Development:** Strengthen Agricultural universities and TVET institutions to produce innovative, entrepreneurial and society responsive graduates
2. **RANCH - Regional Anchor Universities for Higher Agricultural Education:** Escalate the setting up of a network of linked universities as African anchor universities/Centres of excellence and academic leadership in agricultural higher education and STI
3. **CREATE - Cultivating Research and Teaching Excellence:** Support the design and implementation of high impact capacity development innovations that provide an environment and opportunities for quality training, experiential learning and engagement by faculty, students and communities
4. **K-HUB - Knowledge Hub for University Networking, Partnership and Advocacy:** Promote a culture of learning and knowledge sharing aimed at improving policy and practice

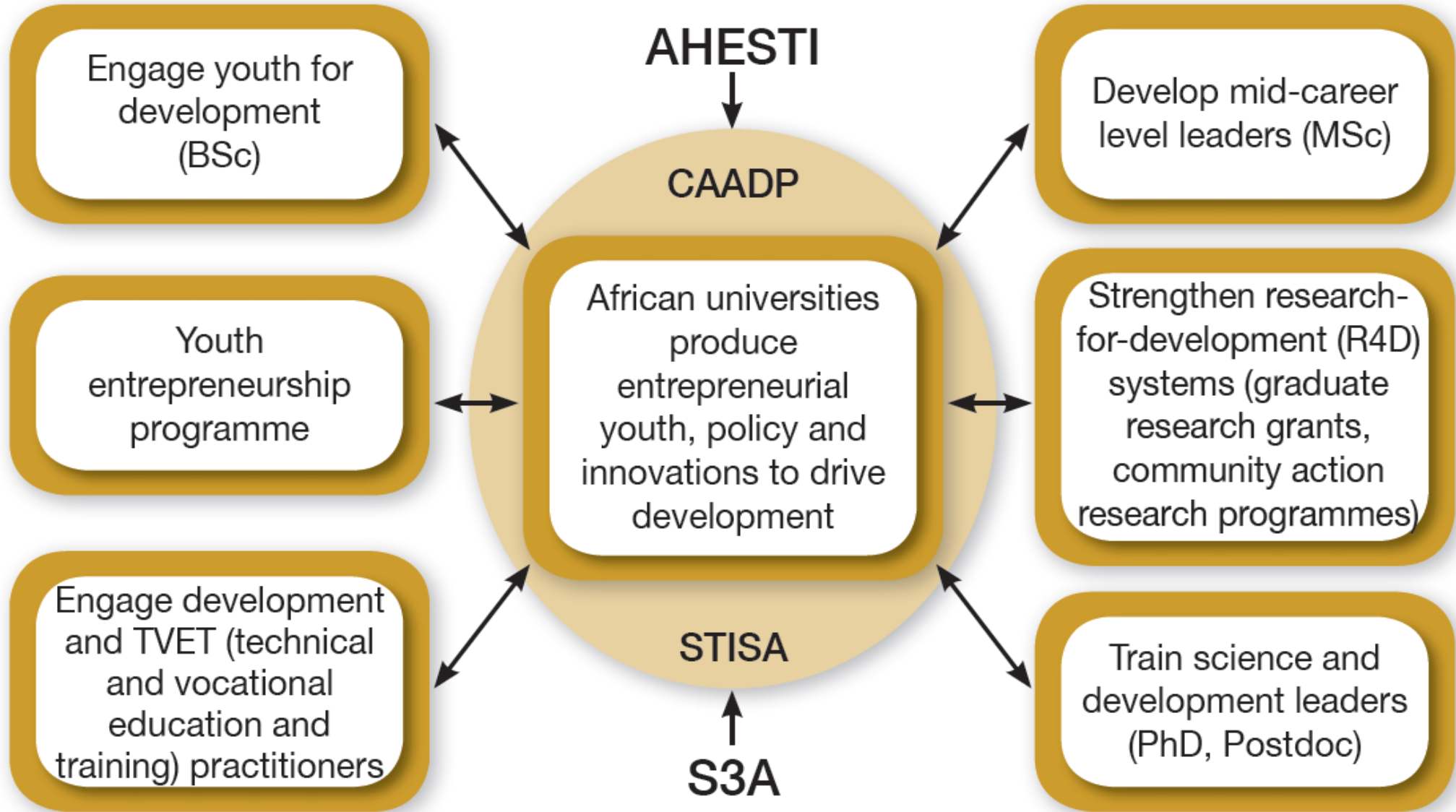




# Instruments and Protocols for Implementation of the AHESTI Flagships

1. **Academic Staff Development (ASD)** through GTAs, scholarships, fellowships and short-term training schemes to enhance and support excellence in academic practice – strengthening leadership and management, professional skills, research, teaching and learning
2. **Regional Academic Mobility Scheme (RAMS)** – increasing access to quality education while strengthening the competitiveness and attractiveness of the institutions themselves
3. **RUFORUM Postdoctoral Fellows (Postdocs)** – providing opportunities for conducting professional research after the completion of their doctoral studies (typically a PhD)
4. **Research Chairs** –expanding scientific research and innovation capacity
5. **Research Grants Scheme (RGS)** for influencing the strategic orientation of research to work closely with all stakeholders along the value chains to strengthen uptake and influence policy





The Regional Universities Forum for Capacity Building in Agriculture (RUFORUM)

# Our Strategic Thrusts



Train a critical mass of MSc and PhD graduates who are responsive to stakeholder needs and development goal



Develop collaborative research and training facilities that achieve economies of scope and scale



Catalyze Technical and Vocational skills development and enhance TVET-University integration



Increase the use of technology to support effective, decentralised learning and sharing of knowledge



Increase the participation and voice of women in research, production and marketing



Create a dynamic regional platform for policy advocacy, coordination, and resource mobilisation for advanced learning/doing

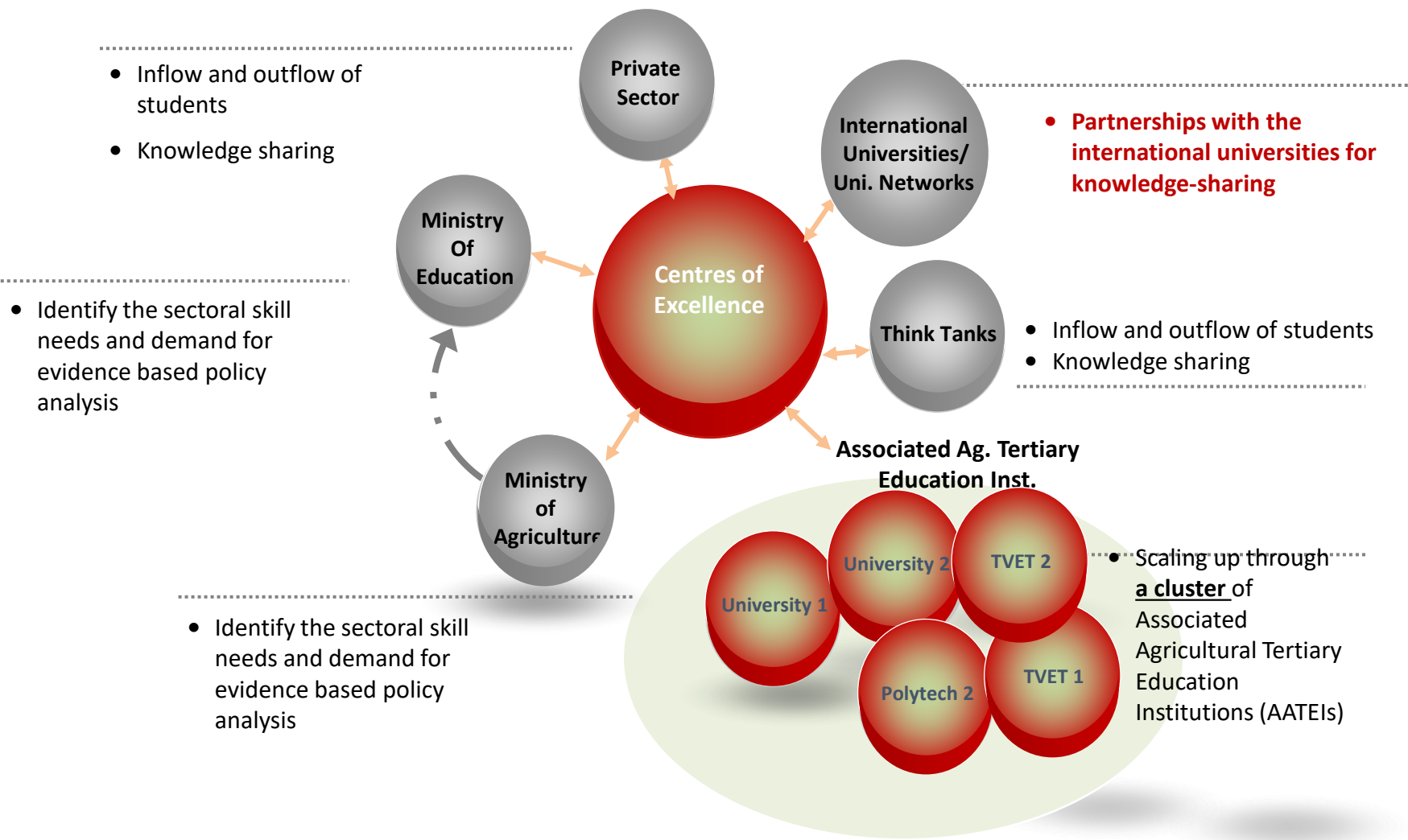


Improve adaptive capacities of universities to produce high quality and innovative training, research, and producing high quality outreach services



Mainstream new approaches within university teaching/research that have impact across the agricultural sector's full value chain

# RUFORUM Regional Centres of Excellence



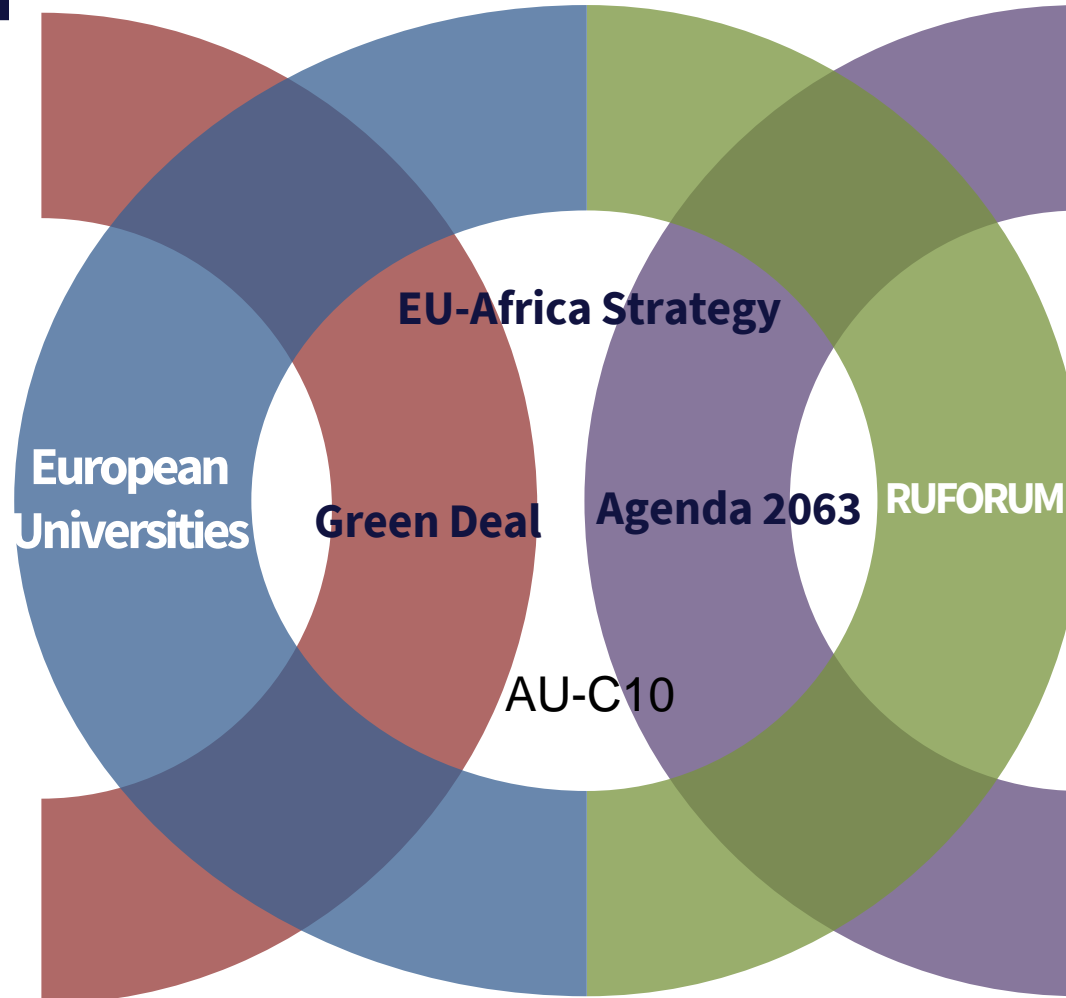
1. Climate Change and Dryland Ecology (3)
2. Plant Breeding and Biotechnology (3)
3. Food Technology and Nutrition (1)
4. Agriculture and Rural Innovation (2)
5. Agro-Ecology (1)
6. Aquaculture and Fisheries
7. Soil and Water Conservation (1)

- Evolved from Regional Training Programmes
- Recognized and funded by globally recognized funders such as World Bank

# RUFORUM and the EU/AU Engagements

## Research & Innovation

- Science innovations for Development through funded programmes responding to STISA #1; LEAP4FNSSA



## Mobility

- Erasmus+, Intra-Africa Mobility
- +15 projects implemented
- +700 academics involved
- +60 African universities involved
- +200 students beneficiaries

## Network to Network

- AGRINATURA- ATHENA & other networks /organisations engagement providing leverage

## Institutional Reform

- Institutional change management
- +60 universities internationalization and collaborations
- +2000 university persons learning

# RUFORUM and the EU Engagements



## Scaling Agri-Entrepreneurship and Community Engagement Training in sub-Saharan Africa (2021 – 2023)

- 2 EU and 10 African Partners

## Scaling agri-entrepreneurship through problem based learning (2020 – 2022)

- 3 EU and 10 Africa Partners

## Climate-smart Agropreneurship Education for Livelihood and Sustainability in Eastern and Southern Africa(2022 – 2025)

- 3 EU and 10 Africa Partners

Project Name	MSc	PhD	Staff	Total Mobility
Sharing Capacity to Build Capacity for Quality Graduate Training in Agriculture in African Universities (SHARE)	52	17	8	77
Inter-University Cooperation to Train Crop Scientists for Enhancing Agriculture in Africa (CSAA)	43	20	10	73
Mobility to Enhance Training of Engineering Graduates in Africa (METEGA)	44	20	8	72
Partnering for Health Professional Training in African Universities (P4PHT)	43	18	8	69
Collaborative Training in Fisheries and Aquaculture in East, Central and Southern Africa (COTRA)	24	12	10	46
Regional Academic Exchange for Enhanced Skills in Fragile Ecosystems Management in Africa (REFORM)	23	11	6	40
Partnership to Train Scientists in Crop Improvement for Food Security in Africa (SCIFSA)	24	12	4	40
Mobility of African Scholars for Transformative Engineering Training (MASTET)	22	12	6	40
Mobility for Innovative Renewable Energy Technologies (MIRET)	33	12	5	50
Mobility to Train Agribusiness and Food Systems Scientists for African Agriculture (TAFSA)	29	11	5	45
Partnering for Health Professional Training in African Universities / P4PHT-II	30	12	6	48
<b>Total</b>	<b>367</b>	<b>157</b>	<b>76</b>	<b>600</b>

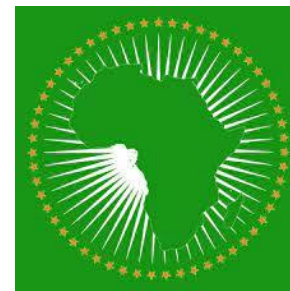
**Long Term EU – Africa Partnership for Food, Nutrition Security and Sustainable Agriculture (LEAP4FNSSA (2018 - 2022**



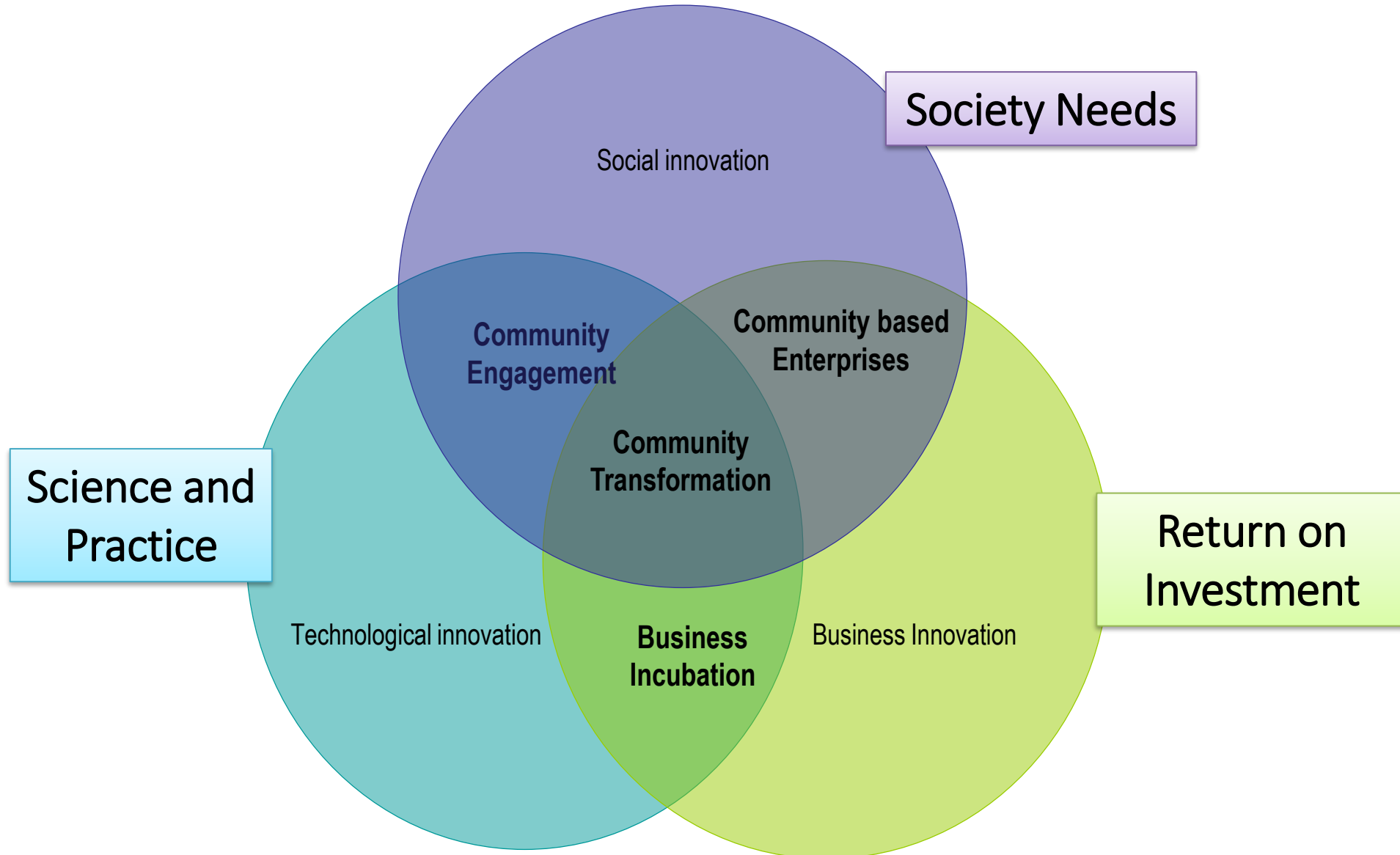
**Potentials of Agroecological practices in East Africa with a focus on Circular water-energy-nutrient systems (PRACTICE) (2023 - 2026**



# RUFORUM Network Partners

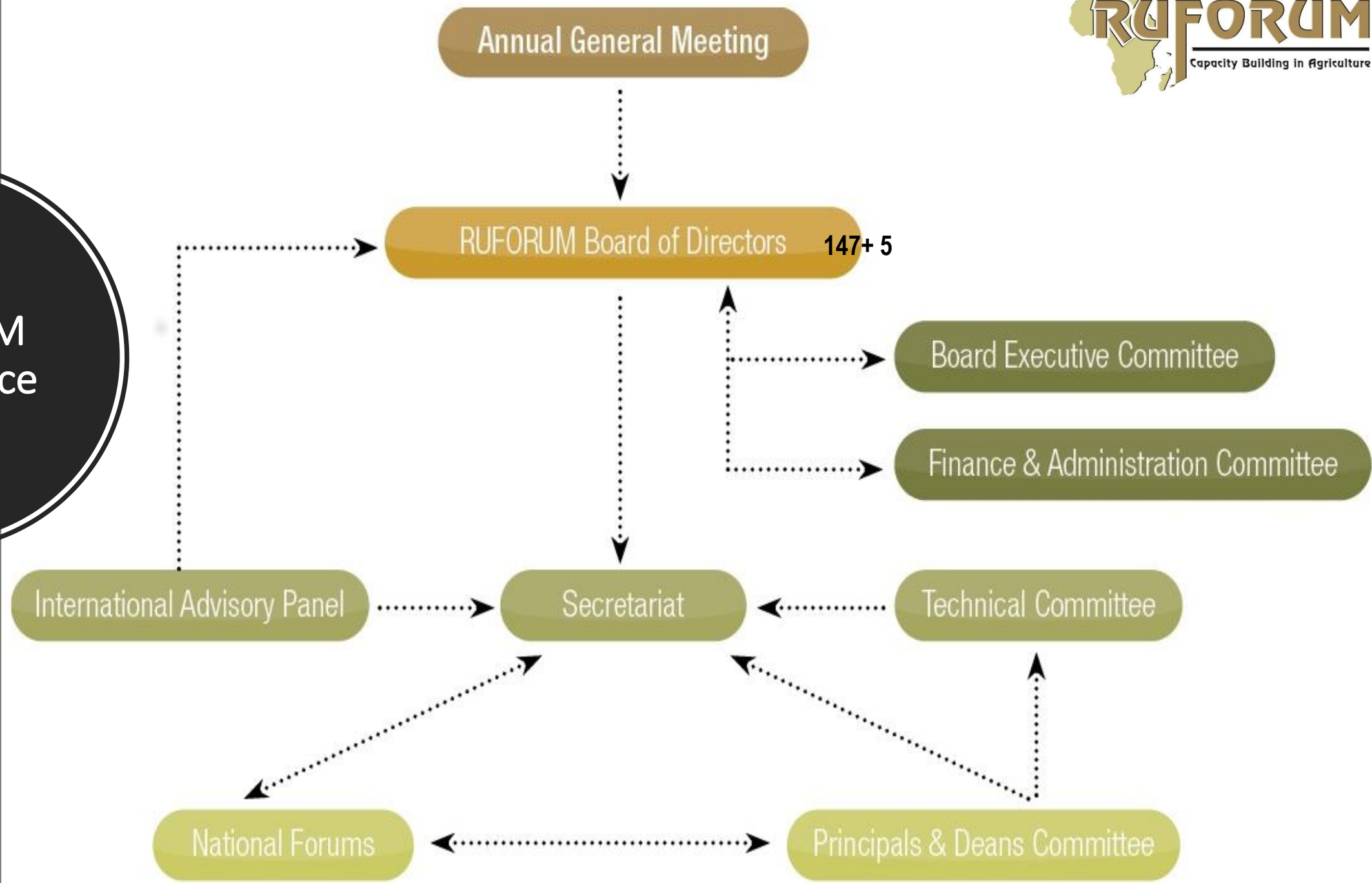


# RUFORUM's Transformative Agenda for Africa's Agriculture





**RUFORUM  
Governance**



*Thank You!*



TRAINING THE NEXT GENERATION OF SCIENTISTS FOR AFRICA



Email Us:  
[secretariat@ruforum.org](mailto:secretariat@ruforum.org)



Like Us on Facebook:  
[ruforumnetwork](https://www.facebook.com/ruforumnetwork)



Follow Us on Twitter:  
[ruforumsec](https://twitter.com/ruforumsec)



Visit Our Blog:  
<http://blog.ruforum.org/>



Visit Our Website:  
[www.ruforum.org](http://www.ruforum.org)