

JG|U

JOHANNES GUTENBERG
UNIVERSITÄT MAINZ

"The value of social science and humanities in Europe" Permanent Representation of Republic of Slovenia to EU

Brussels, 6. December 2018

Research on Societies in Future European Research Funding

Dr. Nicole Birkle



Research On Societies in Europe



JOHANNES GUTENBERG
UNIVERSITÄT MAINZ

ROSE – The Working Group



Research On Societies in Europe

ROSE is a working group of German **EU liaison officers** founded in 2017.



Katharina Berghöfer,
Hamburg



Nicole Birkle,
Mainz



Geny Piotti,
Frankfurt Oder



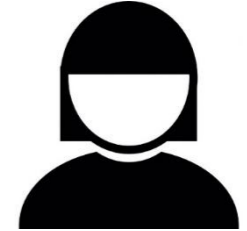
Stefanie Preuss,
Konstanz



Ursula Schlichter,
Mannheim



Christian Veldman,
Gießen



Kristina Wege,
Frankfurt / Main

Our main objectives are to contribute to the creation of the new framework programme for research and innovation Horizon Europe, and to sustainably strengthening of the role of **research on societies** in the **European Research Area**.

ROSE is at the moment supported by the universities of Mainz, Mannheim and Frankfurt / Main.



We strongly encourage **scientists** and **colleagues** to join and support us.



Why ROSE ?



Research On Societies in Europe

In Horizon 2020

- SSH topics significantly underrepresented despite in pillar 3 "Societal Challenges", SC6: "Europe in a changing world - Inclusive, innovative and reflective societies".
- Low budget and high oversubscription in SC6.
- Many SC6 calls and topics strongly focused on ICT / technology driven approaches.
- No real success of embedding / integrating SSH in all areas of H2020 according to the annual reports
- Scientists from SSH were often asked too late to join a consortium to significantly contribute to the conception of projects.
- Interdisciplinarity between the natural sciences and SSH often failed due to a lack of a common lingua franca



JOHANNES GUTENBERG
UNIVERSITÄT MAINZ

Europe – The challenges ?


- Europe currently **suffers** above all from a vanishing confidence in democratic orders, economic crises, social inequality, migration processes, nationalism and populism, demographic change, new digital realities, and fake news.
- Europe faces **diverging ideas** on its future direction and role in the world.
- Europe depends on a more effective **exchange** between researchers, policy makers and citizens on the role of research on societies.
- Europe needs a stronger SSH community **lobbying** for the intrinsic value of its research topics and outputs.
- However, many scholars in the humanities and social sciences still have insufficient experience in communicating with stakeholders and with the EU Commission or make too little use of it.


Horizon Europe – The Solution ?

- The draft proposal for Horizon Europe published in June 2018 by the European Commission does not fully address **citizens' concerns** and the **challenges** Europe faces.
- Research on democracy must develop knowledge-based solutions to **foster democratic orders**, and to improve the functioning of institutions and communication structures.
- Research on social transformations shall address the conditions of inequality properly to design new forms of **social protection**, and to guarantee economic growth.
- As the core basis for both social and democratic stability, Horizon Europe must include **educational research** both as a new area of intervention and as a **mission**.
- Horizon Europe does not offer enough possibilities for **joint research** on originally European socio-political questions/in the field of SSH.

ROSE – what we did so far ?

Activities:


 First recommendation paper on: **CULTIVATING EUROPE: DEMOCRATIC EUROPE • SOCIAL EUROPE • EDUCATED EUROPE** (January 2018)


 Critical Statement of the ROSE Working group on the Draft Proposal for Horizon Europe (June 2018)

http://www.uni-mainz.de/forschung/Dateien/ROSE_Cultivating%20Europe_Democratic_Social_Educated_June2018.pdf

CULTIVATING EUROPE: DEMOCRATIC EUROPE • SOCIAL EUROPE • EDUCATED EUROPE

The present recommendation contributes to the debate on the creation of the new Framework Programme FP9. It points to the importance of a proper role of research on European societies within the next Framework Programme taking into account the challenges Europe, European societies and their citizens face in a globalized, digitalized and innovation-driven world. These research fields must be seen as corner stones for cultivating Europe. The social, cultural, economic and human dimensions of the ongoing manifold, multifaceted and complex transformations must be scrutinized to build a comprehensive evidence base for policymaking towards a democratic, social, inclusive and competitive Europe.

Therefore, we recommend the following research **CHALLENGES** and **MISSIONS** to be the core of the next European Research Framework Programme in a growing digital and global Europe.

CULTIVATING EUROPE



We argue that the future European Framework Programme FP9 shall define new Societal Challenges and Missions for European collaborative research including small and medium size projects, in part with bottom-up approaches. These Missions shall promote research that

- a) produces scientific analyses on how EU member states, its regions and citizens have been affected by and react to the present and future socio-political and socio-economic challenges.
- b) identifies best-practices on how those challenges have been successfully addressed and develops new models for future developments.
- c) provides decision-makers with scenarios on the effects that different decisions may produce.

ROSE – what we did so far ?



Activities:

Workshop in Brussels on: New Horizons: Research on Societies in Future European Research Funding (27.09.2018)

Participants: researchers and representatives of university management boards, the Programme Committee of the Societal Challenge 6 in Horizon 2020, EASSH, EARMA, NET4SOCIETY, KOWI, SCIENCELEADS, the German National Contact Points Society, the German Rectors Conference, the Leibniz Association, the State Representative of Brandenburg, Hessen and North Rhine-Westphalia, the European Commission (Harald Hartung, Head of Unit, Directorate-General for Research and Innovation; Loukas Stemitsiotis Directorate-General for Employment, Social Affairs and Inclusion; Alice Xenia Rajewsky, Head of Sector Humanities, European Research Council Executive Agency).

Poster Presentation at: Austrian EU Council Presidency Conference on Impact of Social Sciences and Humanities for a European Research Agenda – Valuation of SSH in mission-oriented research (28.-29.11.2018)

CULTIVATING EUROPE

DEMOCRATIC EUROPE • SOCIAL EUROPE • EDUCATED EUROPE

Katharina Berghöfer (Hamburg University) • Nicola Birkle (Johannes Gutenberg University Mainz) • Gery Flottl (European University Viadrina) • Stefania Pruss (University of Konstanz) • Ursula Schlichter (University of Mannheim) • Christian Valdman (Justus Liebig University Gießen) • Kristina Wago (Goethe University Frankfurt)

Europe – The Challenge ?

- Europe currently **suffers** from a vanishing confidence in democratic orders, economic crises, social inequality, migration processes, nationalism and populism, demographic change, new digital realities, and fake news.
- Europe faces **diverging ideas** on its future direction and role in the world.
- Europe depends on a more effective **exchange** between researchers, policy makers and citizens on the role of research on societies.
- Europe needs a stronger SSH community **lobbying** for the intrinsic value of its research topics and outputs.

Horizon Europe – The Solution ?

- The draft proposal for Horizon Europe does not fully address **citizens' concerns**.
- Research on democracy must develop knowledge-based solutions to **foster democratic orders**, and to improve the functioning of institutions and communication structures.
- Research on social transformations needs to address the conditions of inequality properly to design new forms of **social protection**, and to guarantee economic growth.
- As the core basis for both social and democratic stability, Horizon Europe must include **educational research** both as a new area of intervention and as a **mission**.



What Research on Societies needs for maximizing impact:

- Funding lines bringing together new **interdisciplinary consortia**.
- Funding lines fostering the cooperation of **ongoing projects**.
- Funding tools like **Proof of Concept** in all programme parts.
- **Project lifetimes** appropriate to the expected social impact.
- A diversified definition of impact and a clear focus on **European added value**.
- Participation of all relevant disciplines in research proposals as a **key evaluation criterion**.

ROSE – The Group

ROSE is a working group of EU liaison officers. Our main objectives are to contribute to the creation of the new framework programme for research and innovation Horizon Europe, and to sustainably strengthen the role of research on societies in the European Research Area. We strongly encourage scientists and colleagues to join and support us.

Homepage: http://www.uni-mainz.de/forschung/2609_ENG_HTML.php
E-Mail: rose@uni-mainz.de

ROSE – The Concept

ROSE proposes a new concept of collaboration that requires a **shift** from discipline-oriented research towards a stronger focus on the **challenge**. Excellent research relies on partnerships between disciplines on **equal terms**. Research on societal challenges requires a less technology-driven approach and a stronger participation and leadership of the SSH.

ROSE – what do we ask for ?

The Concept

- ROSE proposes a new concept of collaboration that requires a **shift** from discipline-oriented research towards a stronger focus on the challenge. Excellent research relies on partnerships between disciplines on equal terms. Research on societal challenges requires a less technology-driven approach and a stronger participation and leadership of the SSH.

What Research on Societies needs for maximizing impact?

- Funding lines bringing together new interdisciplinary consortia.
- Funding lines fostering the cooperation of ongoing projects.
- Funding tools like Proof of Concept in all programme parts.
- Project lifetimes appropriate to the expected social impact.
- A diversified definition of impact and a clear focus on European added value.
- Participation of all relevant disciplines in research proposals as a key evaluation criterion.

ROSE – what universities can do ?



Research On Societies in Europe

- Increased participation in stakeholder consultations and in local lobbying work in Brussels (on the research agenda, but also on structural issues, such as basic research versus applied research and bottom-up versus top-down).
- Feeding urgent research topics, e.g. educational research, not only into European funding programmes, but also into national funding schemes.
- Raise awareness of the importance of European research funding and the opportunities it offers.
- Elaboration of special topics for SSH, e.g. in the form of information events (e.g. on Sustainable Development Goals, Impact, Ethics, inter/crossdisciplinary and intersectoral studies, ERC for SSH: Making better use of opportunities, ...)
- Developing measures to strengthening the SSH at universities in order to promote their future participation in European funding programmes in the longer term.
- Reinforce the cooperation between researchers and university administrations with stakeholders such as NCPs, rectors' conferences, EASSH, EUA, Net4Society, and policy makers.



JOHANNES GUTENBERG
UNIVERSITÄT MAINZ

ROSE – the next steps



Research On Societies in Europe

- ROSE highly encourages researchers and colleagues in administration from all over Europe to join forces to strengthening the role of SSH in the future European research agenda, if not in Horizon Europe, then maybe follow-up programmes.
- ROSE needs more members to continue our work for and with SSH ! We are looking forward to cooperating with single persons or institutions. Please contact us for further information.
 - rose@uni-mainz.de

Thank you very much for your attention !